



## **Tyre changer G10760.17**

GTIN: 5063084206220

SKU: RAV.G0760.206220

Universal, fully automatic, 2 speeds (max. 8 rpm), wireless console unit, truck, rim diameter 11 – 50" (60" with extension set), max. rim width 1750 mm

---

### **DESCRIPTION**

Electrohydraulic tyre changer for trucks, agricultural and earthmoving vehicles. The dimensions and work strokes are such as to ensure maximum efficiency for the entire range of tyres.

- Thanks to its considerable bead breaking force mounting and demounting are effortless, even when working with tyres which have been left on the rim for a long period of time in construction sites or mines
- After 5 sec. the machine has not been used, the motor turns off
- Double speed for chucking table rotation
- The electro-brake allows immediate stopping of the rotation to avoid any damage to the tyre
- Clamping capacity 11 - 50" (60" with extension set)
- Ideal also for many 19" and 22,5" truck wheels
- The stepped claws allow 90 mm internal diameter clamping with no need of accessories
- The big chucking dimension permits to work on extreme tyres without any interference with the chucking arm, granting also to reach 50" without any need of extensions
- Wireless control unit

**ACCESSORIES****Bead-locking clamp for alloy rims**

G90A6

Protection for alloy rims

**Mounting lever**

G108A3

Short, patented

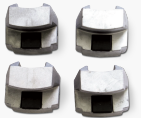
**Rings lever for trucks**

G108A13

**Brush wood, angled**

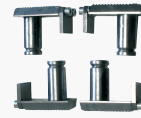
G108A16

For wheel assembly machines

**Clamp protections for alloy rims**

G108A1

1 set / 4 pieces

**Adapters with increased adherence**

G108A5

With increased adherence

**Pneumatic bead pushing device for agricultural tyres**

G108A34

**Clamping range extensions for rim Ø up to 60"**

G108A39

Adapters to increase clamping capacity | 1 set / 4 pieces

**TECHNICAL DETAILS**

|   |              |
|---|--------------|
| <b>Mounting head design</b>             | Automatic    |
| <b>Mounting arm design</b>              | Swiveling    |
| <b>Mounting column design</b>           | Rigid        |
| <b>TeqLink</b>                          | Not possible |
| <b>Workshop-Net</b>                     | Not possible |
| <b>Clamping device design</b>           | central      |
| <b>Min. clamping capacity</b>           | 11"          |
| <b>Max. clamping capacity</b>           | 50"          |
| <b>Max. rim width</b>                   | 69"          |
| <b>Min. rim diameter</b>                | 11"          |
| <b>Max. rim diameter</b>                | 50"          |
| <b>Tire type truck</b>                  | All types    |
| <b>Max. wheel width</b>                 | 1750mm       |
| <b>Max. wheel diameter</b>              | 2700mm       |
| <b>Max. wheel weight</b>                | 3000kg       |
| <b>Automatic bead-breaking movement</b> | Yes          |
| <b>Bead breaker force</b>               | 42kN         |
| <b>Number of mounting speeds</b>        | 2            |
| <b>Rotation speed</b>                   | 4 / 8rpm     |
| <b>Max. torque</b>                      | 6000Nm       |
| <b>Chuck motor rating</b>               | 1,85 / 2,5kW |
| <b>Driving power</b>                    | 1,5 / 2,2kW  |
| <b>Electrical connection</b>            | 400 V, 50 Hz |
| <b>Phases</b>                           | 3            |

|                                   |        |
|-----------------------------------|--------|
| <b>Width</b>                      | 2065mm |
| <b>Depth</b>                      | 3215mm |
| <b>Height</b>                     | 1985mm |
| <b>Country of Origin, customs</b> | IT     |