

Scissor lift **RAV650N.6.55ISI**

GTIN: 5063084193964

SKU: RAV.650N6.193964

5.0 t, electrohydraulic, platform length 5500 mm, with play detector and wheel-free jack, inground

DESCRIPTION

RAV600N Series - One Lift for Double Solutions: The new lift geometry simplifies the flush mounting pit construction. Lifts with big platforms, structured and designed for maximum stability also when loaded with large vehicles.

- Very versatile: the same lift can be flush or floor mounted
- Easy installation: easy setting up of pit
- Wide ranging applications: suitable for different operations on various types of vehicle

- Large wheel stop for high working safety.
- Integrated wheel free lift with levelling system to ensure a completely flat working surface.
- The hydraulic synchronisation of the platform movements is independent of the load distribution, and is guaranteed by a patented hydraulic synchronization device.
- All pivoting points are equipped with maintenance free self-lubricating bushings.
- Base plates with levelling system for an easy installation.
- Mechanical locking device with automatic engagement and pneumatic release, ensuring maximum safety when lift is in parking position.
- The new lift geometry simplifies the flush mounting pit construction.
- Greater lifting height.

- All lifts are supplied for recessed installation - The drive on ramp kit (see accessories) enables to convert the lift from flush mounted to floor version.
- Optimal sliding of jacking beam: Preinstalled galvanised guide on the inner side of the platform, which allows fast and smooth sliding of the jacking beam.

ACCESSORIES

Drive-on ramp kit

S600NA12

1350 mm, ground ramps | floor installation kit for 600N series lifts with wheel-free jack | 1 set / 2 pieces


Drive-on ramp kit

S600NA13

1800 mm, ground ramps | floor installation kit for 600N series lifts with wheel-free jack | 1 set / 2 pieces


Drive-on ramp kit

S600NA18

1560 mm, suspended ramps | floor installation kit for 600N series lifts with wheel-free jack | 1 set / 2 pieces


Drive-on ramp kit 2000 mm

S600NA20

floor installation kit for 600N series lifts with wheel-free jack | 1 set / 2 pieces


Pipe cover 1 m

S510A1

For surface installation of lifts


Rubber pads

S505A7

20 mm | suitable for RAV.640N1.193391, RAV.650N1.193742, RAV.650N2.193858, RAV.650N2.193520, RAV.650N2.193667, RAV.650N6.193964, RAV.650N5.193902, RAV.660N2.193360, RAV.650N5.193018, RAV.650N6.193025, RAV.640N5.193049, RAV.640N4.192998, RAV.640N3.192981, RAV.650N2.193384 and RAV.650N5.193919 | 1 set / 4 pieces


Rubber pads

S505A6

40 mm | suitable for RAV.640N1.193391, RAV.650N1.193742, RAV.650N2.193858, RAV.650N2.193520, RAV.650N2.193667, RAV.650N6.193964, RAV.650N5.193902, RAV.660N2.193360, RAV.650N5.193018, RAV.650N6.193025, RAV.640N5.193049, RAV.640N4.192998, RAV.640N3.192981, RAV.650N2.193384 and RAV.650N5.193919 | 1 set / 4 pieces


Rubber pads

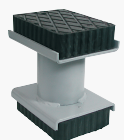
S505A9

60 mm | suitable for RAV.640N1.193391, RAV.650N1.193742, RAV.650N6.193964, RAV.660N2.193360, RAV.650N6.193025, RAV.640N5.193049 and RAV.640N4.192998 | 1 set / 4 pieces


Rubber pads

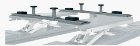
S505A5

120 mm | suitable for RAV.640N1.193391, RAV.650N1.193742, RAV.650N2.193858, RAV.650N2.193520, RAV.650N2.193667, RAV.650N6.193964, RAV.650N5.193902, RAV.660N2.193360, RAV.650N5.193018, RAV.650N6.193025, RAV.640N5.193049, RAV.640N4.192998, RAV.640N3.192981, RAV.650N2.193384 and RAV.650N5.193919 | 1 set / 4 pieces


Rubber pads

S505A1

200 mm | suitable for RAV.640N1.193391, RAV.650N1.193742, RAV.650N2.193858, RAV.650N2.193520, RAV.650N2.193667, RAV.650N6.193964, RAV.650N5.193902, RAV.660N2.193360, RAV.650N5.193018, RAV.650N6.193025, RAV.640N5.193049, RAV.640N4.192998, RAV.640N3.192981, RAV.650N2.193384 and RAV.650N5.193919 | 1 set / 4 pieces

ACCESSORIES**Traverses for XS30-CAT**

S505A2

For vans and off-road vehicles | 1 set / 2 pieces

**Drive-through ramp kit**

S650A5

1350 mm, ground ramps | for 600N series lifts with wheel-free jack | 1 set / 2 pieces

**Drive-through ramp kit 1800 mm**

S600NA17

for 600N series lifts with wheel-free jack | 1 set / 2 pieces

**Drive-through ramp kit**

S600NA8

1560 mm, suspended ramps | for 600N series lifts with wheel-free jack | 1 set / 2 pieces

**Drive-through ramp kit**

S600NA4

2000 mm, suspended ramps | for 600N series lifts with wheel-free jack | 1 set / 2 pieces

**Additional platform for three wheelers**

S640A2

For all electro-hydraulic scissor lifts

**Control unit cover for all electro-hydraulic scissor lifts**

S611A4

To protect the control panel | for all models

TECHNICAL DETAILS

Scissor lift design	Scissors with runways
Mode of drive	Electrohydraulic
Type of installation	Surface mounted
Capacity	5000kg
Max. lifing height at floor level	1805mm
Lifting time	47s
Lowering time loaded	40s
Play detector	Standard
Surface coating	Powder coated
Wheel alignment	Not possible
Length of platforms	5500mm
Width of platforms	650mm
Space of platforms	900mm
Wheel free lift	Standard
Rated load capacity of wheel free lift	4000kg
Lifting travel of wheel free lift	490mm
Min. intake length wheel free lift	1390mm
Max. intake length wheel free lift	2100mm
Driving power	2,6kW
Electrical connection	230 V, 50 Hz
Air supply	280bar
Length	5500mm

Width 2200mm

Installation depth 295mm

Country of Origin, customs IT