



## **Scissor lift RAV640N.1ISI**

GTIN: 5063084193391

SKU: RAV.640N1.193391

4.2 t, electrohydraulic, with level runways, platform length 4600 mm, with wheel-free jack, inground

---

### **DESCRIPTION**

RAV600N Series - One Lift for Double Solutions: The new lift geometry simplifies the flush mounting pit construction. Lifts with big platforms, structured and designed for maximum stability also when loaded with large vehicles.

- Very versatile: the same lift can be flush or floor mounted
- Easy installation: easy setting up of pit
- Wide ranging applications: suitable for different operations on various types of vehicle
  
- Large wheel stop for high working safety.
- Integrated wheel free lift with levelling system to ensure a completely flat working surface.
- The hydraulic synchronisation of the platform movements is independent of the load distribution, and is guaranteed by a patented hydraulic synchronization device.
- All pivoting points are equipped with maintenance free self-lubricating bushings.
- Base plates with levelling system for an easy installation.
- Mechanical locking device with automatic engagement and pneumatic release, ensuring maximum safety when lift is in parking position.
- The new lift geometry simplifies the flush mounting pit construction.
- Greater lifting height.
  
- All lifts are supplied for recessed installation - The drive on ramp kit (see accessories) enables to convert the lift from flush mounted to floor version.
- Optimal sliding of jacking beam: Preinstalled galvanised guide on the inner side of the platform, which allows fast and smooth sliding of the jacking beam.

**ACCESSORIES**

**Drive-on ramp kit**

S600NA12

1350 mm, ground ramps | floor installation kit for 600N series lifts with wheel-free jack | 1 set / 2 pieces


**Drive-on ramp kit**

S600NA13

1800 mm, ground ramps | floor installation kit for 600N series lifts with wheel-free jack | 1 set / 2 pieces


**Drive-on ramp kit**

S600NA18

1560 mm, suspended ramps | floor installation kit for 600N series lifts with wheel-free jack | 1 set / 2 pieces


**Drive-on ramp kit 2000 mm**

S600NA20

floor installation kit for 600N series lifts with wheel-free jack | 1 set / 2 pieces


**Hose extension**

S650.1SIC/D/2

2 m, control unit right | mounting the operating unit in a special position - in drive-up direction "right" from the platform, at a distance of 2 m


**Hose extension**

S650.1SIC/S/2

2 m, control unit left | mounting the operating unit in a special position - in drive-up direction "left" from the platform, at a distance of 2 m


**Pipe cover 1 m**

S510A1

For surface installation of lifts


**Rubber pads**

S505A7

20 mm | suitable for RAV.640N1.193391, RAV.650N1.193742, RAV.650N2.193858, RAV.650N2.193520, RAV.650N2.193667, RAV.650N6.193964, RAV.650N5.193902, RAV.660N2.193360, RAV.650N5.193018, RAV.650N6.193025, RAV.640N5.193049, RAV.640N4.192998, RAV.640N3.192981, RAV.650N2.193384 and RAV.650N5.193919 | 1 set / 4 pieces


**Rubber pads**

S505A6

40 mm | suitable for RAV.640N1.193391, RAV.650N1.193742, RAV.650N2.193858, RAV.650N2.193520, RAV.650N2.193667, RAV.650N6.193964, RAV.650N5.193902, RAV.660N2.193360, RAV.650N5.193018, RAV.650N6.193025, RAV.640N5.193049, RAV.640N4.192998, RAV.640N3.192981, RAV.650N2.193384 and RAV.650N5.193919 | 1 set / 4 pieces


**Rubber pads**

S505A9

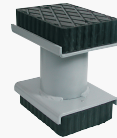
60 mm | suitable for RAV.640N1.193391, RAV.650N1.193742, RAV.650N6.193964, RAV.660N2.193360, RAV.650N6.193025, RAV.640N5.193049 and RAV.640N4.192998 | 1 set / 4 pieces

**ACCESSORIES**

**Rubber pads**

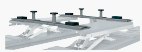
S505A5

120 mm | suitable for RAV.640N1.193391, RAV.650N1.193742, RAV.650N2.193858, RAV.650N2.193520, RAV.650N2.193667, RAV.650N6.193964, RAV.650N5.193902, RAV.660N2.193360, RAV.650N5.193018, RAV.650N6.193025, RAV.640N5.193049, RAV.640N4.192998, RAV.640N3.192981, RAV.650N2.193384 and RAV.650N5.193919 | 1 set / 4 pieces


**Rubber pads**

S505A1

200 mm | suitable for RAV.640N1.193391, RAV.650N1.193742, RAV.650N2.193858, RAV.650N2.193520, RAV.650N2.193667, RAV.650N6.193964, RAV.650N5.193902, RAV.660N2.193360, RAV.650N5.193018, RAV.650N6.193025, RAV.640N5.193049, RAV.640N4.192998, RAV.640N3.192981, RAV.650N2.193384 and RAV.650N5.193919 | 1 set / 4 pieces


**Traverses for XS30-CAT**

S505A2

For vans and off-road vehicles | 1 set / 2 pieces


**Drive-through ramp kit**

S650A5

1350 mm, ground ramps | for 600N series lifts with wheel-free jack | 1 set / 2 pieces


**Drive-through ramp kit 1800 mm**

S600NA17

for 600N series lifts with wheel-free jack | 1 set / 2 pieces


**Drive-through ramp kit**

S600NA8

1560 mm, suspended ramps | for 600N series lifts with wheel-free jack | 1 set / 2 pieces


**Drive-through ramp kit**

S600NA4

2000 mm, suspended ramps | for 600N series lifts with wheel-free jack | 1 set / 2 pieces


**Additional platform for three wheelers**

S640A2

For all electro-hydraulic scissor lifts


**Control unit cover for all electro-hydraulic scissor lifts**

S611A4

To protect the control panel | for all models


**Hose extension**

S650.1SIC/D/5

5 m, control unit right | mounting the operating unit in a special position - in drive-up direction "right" from the platform, at a distance of 5 m | suitable for RAV.640N1.193278, RAV.640N2.193117, RAV.640N1.193391, RAV.650N1.193742, RAV.650N2.193858, RAV.650N2.193520, RAV.650N2.193667, RAV.660N2.193360 and RAV.650N2.193384


**Hose extension**

S650.1SIC/S/5

5 m, control unit left | mounting the operating unit in a special position - in drive-up direction "left" from the platform, at a distance of 5 m | suitable for RAV.640N1.193278, RAV.640N2.193117, RAV.640N1.193391, RAV.650N1.193742, RAV.650N2.193858, RAV.650N2.193520, RAV.650N2.193667, RAV.660N2.193360 and RAV.650N2.193384



**TECHNICAL DETAILS**

|   |                       |
|---|-----------------------|
| <b>Scissor lift design</b>                    | Scissors with runways |
| <b>Mode of drive</b>                          | Electrohydraulic      |
| <b>Type of installation</b>                   | Surface mounted       |
| <b>Capacity</b>                               | 4200kg                |
| <b>Max. lifing height at floor level</b>      | 1805mm                |
| <b>Lifting time</b>                           | 40s                   |
| <b>Lowering time loaded</b>                   | 40s                   |
| <b>Play detector</b>                          | Not possible          |
| <b>Surface coating</b>                        | Powder coated         |
| <b>Wheel alignment</b>                        | Not possible          |
| <b>Length of platforms</b>                    | 4600mm                |
| <b>Width of platforms</b>                     | 615mm                 |
| <b>Space of platforms</b>                     | 870mm                 |
| <b>Wheel free lift</b>                        | Standard              |
| <b>Rated load capacity of wheel free lift</b> | 3500kg                |
| <b>Lifting travel of wheel free lift</b>      | 500mm                 |
| <b>Min. intake length wheel free lift</b>     | 1390mm                |
| <b>Max. intake length wheel free lift</b>     | 2000mm                |
| <b>Driving power</b>                          | 3,5kW                 |
| <b>Electrical connection</b>                  | 230 V, 50 Hz          |
| <b>Air supply</b>                             | 280bar                |
| <b>Length</b>                                 | 4600mm                |

**Width** 2100mm

**Installation depth** 295mm

**Country of Origin, customs** IT