



Scissor lift RAV640N.1ISI

GTIN: 5063084193391

SKU: RAV.640N1.193391

4.2 t, electrohydraulic, with level runways, platform length 4600 mm, with wheel-free jack, inground

DESCRIPTION

RAV600N Series - One Lift for Double Solutions: The new lift geometry simplifies the flush mounting pit construction. Lifts with big platforms, structured and designed for maximum stability also when loaded with large vehicles.

- Very versatile: the same lift can be flush or floor mounted
- Easy installation: easy setting up of pit
- Wide ranging applications: suitable for different operations on various types of vehicle

- Large wheel stop for high working safety.
- Integrated wheel free lift with levelling system to ensure a completely flat working surface.
- The hydraulic synchronisation of the platform movements is independent of the load distribution, and is guaranteed by a patented hydraulic synchronization device.
- All pivoting points are equipped with maintenance free self-lubricating bushings.
- Base plates with levelling system for an easy installation.
- Mechanical locking device with automatic engagement and pneumatic release, ensuring maximum safety when lift is in parking position.
- The new lift geometry simplifies the flush mounting pit construction.
- Greater lifting height.

- All lifts are supplied for recessed installation - The drive on ramp kit (see accessories) enables to convert the lift from flush mounted to floor version.
- Optimal sliding of jacking beam: Preinstalled galvanised guide on the inner side of the platform, which allows fast and smooth sliding of the jacking beam.

ACCESSORIES

Drive-on ramp kit

S600NA12

1350 mm, ground ramps | floor installation kit for 600N series lifts with wheel-free jack | 1 set / 2 pieces


Drive-on ramp kit

S600NA13

1800 mm, ground ramps | floor installation kit for 600N series lifts with wheel-free jack | 1 set / 2 pieces


Drive-on ramp kit

S600NA18

1560 mm, suspended ramps | floor installation kit for 600N series lifts with wheel-free jack | 1 set / 2 pieces


Drive-on ramp kit 2000 mm

S600NA20

floor installation kit for 600N series lifts with wheel-free jack | 1 set / 2 pieces


Hose extension

S650.1SIC/D/2

2 m, control unit right | mounting the operating unit in a special position - in drive-up direction "right" from the platform, at a distance of 2 m


Hose extension

S650.1SIC/S/2

2 m, control unit left | mounting the operating unit in a special position - in drive-up direction "left" from the platform, at a distance of 2 m


Pipe cover 1 m

S510A1

For surface installation of lifts


Rubber pads

S505A7

20 mm | suitable for RAV.640N1.193391, RAV.650N1.193742, RAV.650N2.193858, RAV.650N2.193520, RAV.650N2.193667, RAV.650N6.193964, RAV.650N5.193902, RAV.660N2.193360, RAV.650N5.193018, RAV.650N6.193025, RAV.640N5.193049, RAV.640N4.192998, RAV.640N3.192981, RAV.650N2.193384 and RAV.650N5.193919 | 1 set / 4 pieces


Rubber pads

S505A6

40 mm | suitable for RAV.640N1.193391, RAV.650N1.193742, RAV.650N2.193858, RAV.650N2.193520, RAV.650N2.193667, RAV.650N6.193964, RAV.650N5.193902, RAV.660N2.193360, RAV.650N5.193018, RAV.650N6.193025, RAV.640N5.193049, RAV.640N4.192998, RAV.640N3.192981, RAV.650N2.193384 and RAV.650N5.193919 | 1 set / 4 pieces


Rubber pads

S505A9

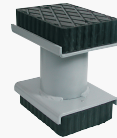
60 mm | suitable for RAV.640N1.193391, RAV.650N1.193742, RAV.650N6.193964, RAV.660N2.193360, RAV.650N6.193025, RAV.640N5.193049 and RAV.640N4.192998 | 1 set / 4 pieces

ACCESSORIES

Rubber pads

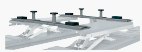
S505A5

120 mm | suitable for RAV.640N1.193391, RAV.650N1.193742, RAV.650N2.193858, RAV.650N2.193520, RAV.650N2.193667, RAV.650N6.193964, RAV.650N5.193902, RAV.660N2.193360, RAV.650N5.193018, RAV.650N6.193025, RAV.640N5.193049, RAV.640N4.192998, RAV.640N3.192981, RAV.650N2.193384 and RAV.650N5.193919 | 1 set / 4 pieces


Rubber pads

S505A1

200 mm | suitable for RAV.640N1.193391, RAV.650N1.193742, RAV.650N2.193858, RAV.650N2.193520, RAV.650N2.193667, RAV.650N6.193964, RAV.650N5.193902, RAV.660N2.193360, RAV.650N5.193018, RAV.650N6.193025, RAV.640N5.193049, RAV.640N4.192998, RAV.640N3.192981, RAV.650N2.193384 and RAV.650N5.193919 | 1 set / 4 pieces


Traverses for XS30-CAT

S505A2

For vans and off-road vehicles | 1 set / 2 pieces


Drive-through ramp kit

S650A5

1350 mm, ground ramps | for 600N series lifts with wheel-free jack | 1 set / 2 pieces


Drive-through ramp kit 1800 mm

S600NA17

for 600N series lifts with wheel-free jack | 1 set / 2 pieces


Drive-through ramp kit

S600NA8

1560 mm, suspended ramps | for 600N series lifts with wheel-free jack | 1 set / 2 pieces


Drive-through ramp kit

S600NA4

2000 mm, suspended ramps | for 600N series lifts with wheel-free jack | 1 set / 2 pieces


Additional platform for three wheelers

S640A2

For all electro-hydraulic scissor lifts


Control unit cover for all electro-hydraulic scissor lifts

S611A4

To protect the control panel | for all models


Hose extension

S650.1SIC/D/5

5 m, control unit right | mounting the operating unit in a special position - in drive-up direction "right" from the platform, at a distance of 5 m | suitable for RAV.640N1.193278, RAV.640N2.193117, RAV.640N1.193391, RAV.650N1.193742, RAV.650N2.193858, RAV.650N2.193520, RAV.650N2.193667, RAV.660N2.193360 and RAV.650N2.193384


Hose extension

S650.1SIC/S/5

5 m, control unit left | mounting the operating unit in a special position - in drive-up direction "left" from the platform, at a distance of 5 m | suitable for RAV.640N1.193278, RAV.640N2.193117, RAV.640N1.193391, RAV.650N1.193742, RAV.650N2.193858, RAV.650N2.193520, RAV.650N2.193667, RAV.660N2.193360 and RAV.650N2.193384

TECHNICAL DETAILS

| | |
|---|-----------------------|
| Scissor lift design | Scissors with runways |
| Mode of drive | Electrohydraulic |
| Type of installation | Surface mounted |
| Capacity | 4200kg |
| Max. lifing height at floor level | 1805mm |
| Lifting time | 40s |
| Lowering time loaded | 40s |
| Play detector | Not possible |
| Surface coating | Powder coated |
| Wheel alignment | Not possible |
| Length of platforms | 4600mm |
| Width of platforms | 615mm |
| Space of platforms | 870mm |
| Wheel free lift | Standard |
| Rated load capacity of wheel free lift | 3500kg |
| Lifting travel of wheel free lift | 500mm |
| Min. intake length wheel free lift | 1390mm |
| Max. intake length wheel free lift | 2000mm |
| Driving power | 3,5kW |
| Electrical connection | 230 V, 50 Hz |
| Air supply | 280bar |
| Length | 4600mm |

Width 2100mm

Installation depth 295mm

Country of Origin, customs IT