



## **Double scissor lift RAV518NL 230 V - 1 Ph - 50-60 Hz**

GTIN: 5063084196033

SKU: RAV.518NL.196033

3.0 t, low-profile (100 mm), electrohydraulic, above ground | 1 x 230 V / 50 – 60 Hz

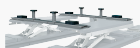
---

### **DESCRIPTION**

- The hydraulic synchronization of the platform movements is independent of the load distribution, with a patented self-adjusting device.
- No mechanical connections between the platforms (maximum operability in the work area).
- Slowed platform movement speed during initial lifting and lowering phases.
- Hinge pins with self-lubricating bush that do not require maintenance.
- Mechanical safety device with automatic engagement and pneumatic disengagement, which prevents accidental lowering of the load, ensuring maximum safety during parking.
- Acoustic signaling during final lowering.
- High-strength steel connecting rods.
- Adjustable mechanical limit switches.

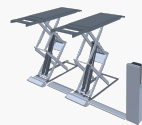
#### **Recessed version.**

- The low profile platforms allow for recessed installations even where it would not be possible to create pits of the usual depth for this type of lift.

**ACCESSORIES****Traverses for XS30-CAT**

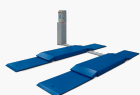
S505A2

For vans and off-road vehicles | 1 set / 2 pieces

**Hose cover 1 m | for surface installation**

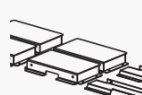
S518A20

1 m | for surface installation

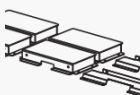
**Drive-on ramp kit**

S540A1

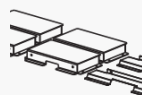
Long additional ramps for low ground clearance vehicles

**Recessed installation kit**

S518A21

**Recessed installation kit**

S535A1

**Recessed installation kit**

S540A2

**TECHNICAL DETAILS**

<b>Scissor lift design</b>	Double scissors
<b>Mode of drive</b>	Electrohydraulic
<b>Type of installation</b>	Floor mounted
<b>Capacity</b>	3000kg
<b>Max. lifting height</b>	1900mm
<b>Lifting time loaded</b>	32s
<b>Lowering time loaded</b>	34s
<b>Play detector</b>	Not possible
<b>Drive-on-height</b>	100mm
<b>Wheel alignment</b>	Not possible
<b>Length of platforms</b>	1943mm
<b>Width of platforms</b>	610mm
<b>Height of platforms</b>	100mm
<b>Space of platforms</b>	801mm
<b>Wheel free lift</b>	Not possible
<b>Driving power</b>	2,6kW
<b>Electrical connection</b>	230 V, 50 - 60 Hz
<b>Phases</b>	1
<b>Noise level</b>	70dB(A)
<b>Length</b>	1950mm
<b>Width</b>	2020mm
<b>Height</b>	1900mm
<b>Weight</b>	600kg