



## Body shop lift **RAV.KBI30.199904**

GTIN: 5063084199904

SKU: RAV.KBI30.199904

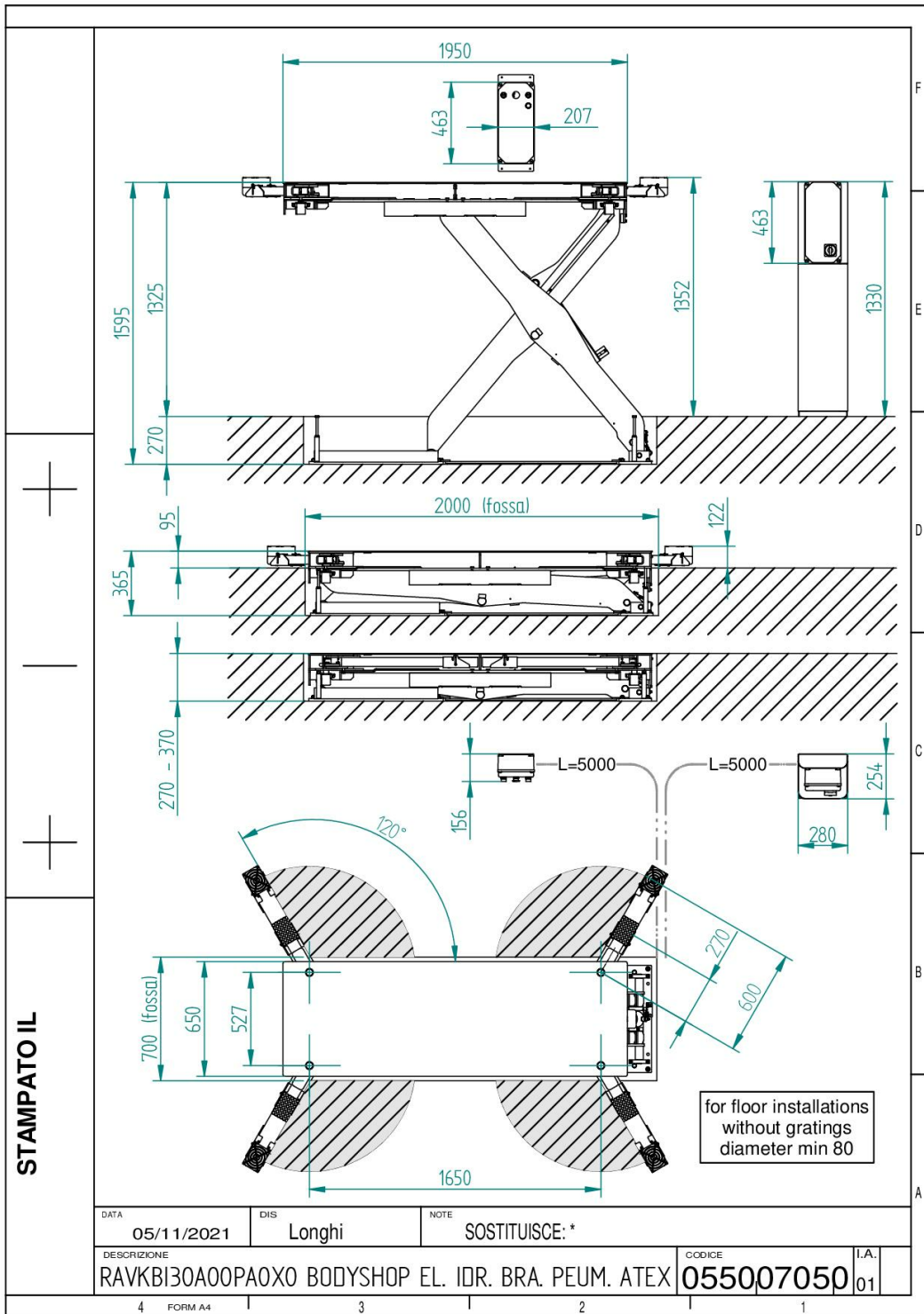
3.0 t, electrohydraulic, ATEX compliant according to Directive 2014/34/EU, with pneumatic operated arms, inground

---

### DESCRIPTION

Scissor lift ideal for installation in both paint booth grids and preparation areas, and flush-mounted for traditional floors. Its ergonomic design allows you to easily reach the pick-up points of the vehicles, eliminating all obstacles surrounding the vehicle, in this way making every operation on the chassis easier.

- Wide range of loadability: suitable for every type of vehicle
- Quick to use: pad built into the arm that reduces the number of operations necessary for lifting the vehicle
- Flexible installation: simple and fast installation with minimum interventions, even when there are grids
- The geometry of the arms was designed for lifting the entire fleet of cars on the road, from microcars to long wheel base sedan.
- Pad always on: The arms have a built-in pad so they can always remain on the lift, even in the rest position. The lift is ready-to-use without requiring the operator to perform any other work.
- The lift can be installed without any additional shim in grids 270 to 370 mm deep.
- Changing the standard intake grille is unnecessary. All you have to do is remove the grids for a 2000 x 700 mm surface area.
- Configurations available: A wide range of configurations is available to satisfy all types of work cycle in the body shop.
- There are no live components in the work area with the anti-explosion configuration meeting Directive 2014/34/EU. Ideal also for being used inside paint booths. The compact electrical panel is directly installed in the workstation.
- Maximum ergonomics for all types of cars
- Elevated lifting height for working standing straight
- The safety of the operations is guaranteed by the automatic arm locking system and the mechanical safety on the cylinder. (Patent pending)



**ACCESSORIES****Connection template**

VSG.KBIAC.900005

For front/back base connection |  
necessary for lift installation

**TECHNICAL DETAILS****Scissor lift design** Low-rise scissors**Mode of drive** Electrohydraulic**Type of installation** Surface mounted**Capacity** 3000kg**Max. lifting height** 1623mm**Max. lifting height at floor level** 1353mm**Lifting time** 40s**Lifting time loaded** 40s**Lowering time** 35s**Lowering time loaded** 50s**Play detector** Not possible**Surface coating** Powder coated**Wheel alignment** Not possible**Length of platforms** 1950mm**Width of platforms** 650mm**Arm layout** Pneumatic**Wheel free lift** Not possible**Driving power** 2,6kW**Electrical connection** 400 V, 50 Hz**Air supply** 7 - 8bar**Max. air supply** 8bar**Length** 1950mm**Width** 650mm**Installation depth** 270 - 370mm

**Country of Origin, customs** IT