



## **4-post lift RAV4652L**

GTIN: 5063084194299

SKU: RAV.4652L.194299

6.5 t, electrohydraulic, symmetrical, track length 5700 mm, with wheel alignment, above ground

---

### **DESCRIPTION**

- The hydraulic cylinder is located inside the fixed platform and is thus perfectly protected
- High-resistant, galvanised and pre-stretched metal cables
- Large-diameter pulleys with self-lubricating and maintenance-free bushes
- Automatic mechanical back-up safety devices (every 100 mm) with pneumatic release allowing stationary operation with unladen cables
- Immediate-triggering safety stud devices in case a cable slackens or fails
- Automatic anti-toe trap alarm during final stages of lift descent
- Mechanical, electrical and hydraulic safety devices in compliance with the prevailing standard for CE marking
- Low-voltage (24 V) electrical system with control circuit
  
- Extra-long platforms for total wheel alignment with front turntables locations and rear slip plates

**ACCESSORIES**


**Jacking beam J17X**  
 VSG.J17XX.901989  
 2.0 t, Hydraulic, with hand-pump | for all hydraulic 4-post lifts / scissor lifts



**Jacking beam J20NX**  
 VSG.J20NX.901941  
 2.0 t, hydraulic, operated by means of hand-pump



**Jacking beam J20PNX**  
 VSG.J20PN.901767  
 2.0 t, air-hydraulic



**Jacking beam J20PNXL**  
 VSG.J20PN.901682  
 2.0 t, air-hydraulic



**Jacking beam J20PNR**  
 VSG.J20PN.901583  
 2.0 t, air-hydraulic



**Jacking beam J20PNRL**  
 VSG.J20PN.901422  
 2.0 t, air-hydraulic



**Jacking beam J30PKL**  
 VSG.J30PK.902368  
 3.0 t, air-hydraulic



**Jacking beam J30X**  
 VSG.J30XX.901514  
 3.0 t, hydraulic, operated by means of hand-pump



**Jacking beam J30PX**  
 VSG.J30PX.901781  
 3.0 t, air-hydraulic



**Jacking beam J30PXL**  
 VSG.J30PX.901804  
 3.0 t, air-hydraulic



**Jacking beam J30PR**  
 VSG.J30PR.901392  
 3.0 t, air-hydraulic



**Jacking beam J30PRL**  
 VSG.J30PR.901828  
 3.0 t, air-hydraulic



**Jacking beam J40PRL**  
 VSG.J40PR.901965  
 4.0 t, air-hydraulic



**Jacking beam J40PXL**  
 VSG.J40PX.902191  
 4.0 t, air-hydraulic



**Jacking beam J40PKL**  
 VSG.J40PK.901880  
 4.0 t, air-hydraulic



**Jacking beam J40PY**  
 VSG.J40PY.902214  
 4.0 t, air-hydraulic



**Jacking beam J50PHT**  
 VSG.J50PH.902238  
 5 t, 392 mm stroke, air-hydraulic, telescopic jack, roller bearings in the track, air supply on site



**Jacking beam J50PHA**  
 VSG.J50PH.902177  
 5.0 t, air-hydraulic

**ACCESSORIES**

**Drive-on ramp kit**

S4651LA3

Long, 1470 mm | for 4-post lifts RAV4651L, RAV4652L | 1 pair


**Post covers for RAV4651L, RAV4652L, RAV4800, RAV4802**

S4800A3


**Rubber pads**

S505A7

20 mm | suitable for RAV.640N1.193391, RAV.650N1.193742, RAV.650N2.193858, RAV.650N2.193520, RAV.650N2.193667, RAV.650N6.193964, RAV.650N5.193902, RAV.660N2.193360, RAV.650N5.193018, RAV.650N6.193025, RAV.640N5.193049, RAV.640N4.192998, RAV.640N3.192981, RAV.650N2.193384 and RAV.650N5.193919 | 1 set / 4 pieces


**Rubber pads**

S505A6

40 mm | suitable for RAV.640N1.193391, RAV.650N1.193742, RAV.650N2.193858, RAV.650N2.193520, RAV.650N2.193667, RAV.650N6.193964, RAV.650N5.193902, RAV.660N2.193360, RAV.650N5.193018, RAV.650N6.193025, RAV.640N5.193049, RAV.640N4.192998, RAV.640N3.192981, RAV.650N2.193384 and RAV.650N5.193919 | 1 set / 4 pieces


**Rubber pads**

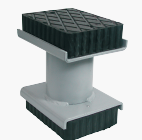
S505A9

60 mm | suitable for RAV.640N1.193391, RAV.650N1.193742, RAV.650N6.193964, RAV.660N2.193360, RAV.650N6.193025, RAV.640N5.193049 and RAV.640N4.192998 | 1 set / 4 pieces


**Rubber pads**

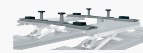
S505A5

120 mm | suitable for RAV.640N1.193391, RAV.650N1.193742, RAV.650N2.193858, RAV.650N2.193520, RAV.650N2.193667, RAV.650N6.193964, RAV.650N5.193902, RAV.660N2.193360, RAV.650N5.193018, RAV.650N6.193025, RAV.640N5.193049, RAV.640N4.192998, RAV.640N3.192981, RAV.650N2.193384 and RAV.650N5.193919 | 1 set / 4 pieces


**Rubber pads**

S505A1

200 mm | suitable for RAV.640N1.193391, RAV.650N1.193742, RAV.650N2.193858, RAV.650N2.193520, RAV.650N2.193667, RAV.650N6.193964, RAV.650N5.193902, RAV.660N2.193360, RAV.650N5.193018, RAV.650N6.193025, RAV.640N5.193049, RAV.640N4.192998, RAV.640N3.192981, RAV.650N2.193384 and RAV.650N5.193919 | 1 set / 4 pieces


**Traverses for XS30-CAT**

S505A2

For vans and off-road vehicles | 1 set / 2 pieces

**TECHNICAL DETAILS**

<b>Number of columns</b>	4
<b>Mode of drive</b>	Electrohydraulic
<b>Control</b>	Electric
<b>Type of installation</b>	Floor mounted
<b>Capacity</b>	6500kg
<b>Max. lifting height</b>	2000mm
<b>Drive-on-height</b>	250mm
<b>Clear span between</b>	3300mm
<b>Clear span between (out)</b>	3780mm
<b>Column height</b>	2560mm
<b>Drive-through width</b>	2810mm
<b>Wheel alignment</b>	Standard
<b>Length of platforms</b>	5700mm
<b>Width of platforms</b>	650mm
<b>Space of platforms</b>	725 - 1025mm
<b>Length with drive-on ramp</b>	6962 - 7278mm
<b>Driving power</b>	2,6kW
<b>Country of Origin, customs</b>	IT