



4-post lift RAV4651L

GTIN: 5063084194091

SKU: RAV.4651L.194091

6.5 t, electrohydraulic, symmetrical, with level runways, track length 5700 mm, wheel alignment optional, above ground

DESCRIPTION

- The hydraulic cylinder is located inside the fixed platform and is thus perfectly protected
 - High-resistant, galvanised and pre-stretched metal cables
 - Large-diameter pulleys with self-lubricating and maintenance-free bushes
 - Automatic mechanical back-up safety devices (every 100 mm) with pneumatic release allowing stationary operation with unladen cables
 - Immediate-triggering safety stud devices in case a cable slackens or fails
 - Automatic anti-toe trap alarm during final stages of lift descent
 - Mechanical, electrical and hydraulic safety devices in compliance with the prevailing standard for CE marking
 - Low-voltage (24 V) electrical system with control circuit
-
- Version with flat platforms

ACCESSORIES


Jacking beam J17X
 VSG.J17XX.901989
 2.0 t, Hydraulic, with hand-pump | for all hydraulic 4-post lifts / scissor lifts



Jacking beam J20NX
 VSG.J20NX.901941
 2.0 t, hydraulic, operated by means of hand-pump



Jacking beam J20PNX
 VSG.J20PN.901767
 2.0 t, air-hydraulic



Jacking beam J20PNXL
 VSG.J20PN.901682
 2.0 t, air-hydraulic



Jacking beam J20PNR
 VSG.J20PN.901583
 2.0 t, air-hydraulic



Jacking beam J20PNRL
 VSG.J20PN.901422
 2.0 t, air-hydraulic



Jacking beam J30PKL
 VSG.J30PK.902368
 3.0 t, air-hydraulic



Jacking beam J30X
 VSG.J30XX.901514
 3.0 t, hydraulic, operated by means of hand-pump



Jacking beam J30PX
 VSG.J30PX.901781
 3.0 t, air-hydraulic



Jacking beam J30PXL
 VSG.J30PX.901804
 3.0 t, air-hydraulic



Jacking beam J30PR
 VSG.J30PR.901392
 3.0 t, air-hydraulic



Jacking beam J30PRL
 VSG.J30PR.901828
 3.0 t, air-hydraulic



Jacking beam J40PRL
 VSG.J40PR.901965
 4.0 t, air-hydraulic



Jacking beam J40PXL
 VSG.J40PX.902191
 4.0 t, air-hydraulic



Jacking beam J40PKL
 VSG.J40PK.901880
 4.0 t, air-hydraulic



Jacking beam J40PY
 VSG.J40PY.902214
 4.0 t, air-hydraulic



Jacking beam J50PHT
 VSG.J50PH.902238
 5 t, 392 mm stroke, air-hydraulic, telescopic jack, roller bearings in the track, air supply on site



Jacking beam J50PHA
 VSG.J50PH.902177
 5.0 t, air-hydraulic

ACCESSORIES

Drive-on ramp kit

S4651LA3

Long, 1470 mm | for 4-post lifts RAV4651L, RAV4652L | 1 pair

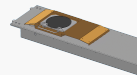

Drive-through ramp kit

S4651LA2

For RAV4651L | 1 set / 2 pieces

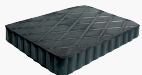

Post covers for RAV4651L, RAV4652L, RAV4800, RAV4802

S4800A3


Seat for turntables | plates and slip plates excluded | 1 set

STDA140

For RAV4350, RAV4401, RAV4405L, RAV4501L, RAV4651L, RAV4800


Rubber pads

S505A7

20 mm | suitable for RAV.640N1.193391, RAV.650N1.193742, RAV.650N2.193858, RAV.650N2.193520, RAV.650N2.193667, RAV.650N6.193964, RAV.650N5.193902, RAV.660N2.193360, RAV.650N5.193018, RAV.650N6.193025, RAV.640N5.193049, RAV.640N4.192998, RAV.640N3.192981, RAV.650N2.193384 and RAV.650N5.193919 | 1 set / 4 pieces


Rubber pads

S505A6

40 mm | suitable for RAV.640N1.193391, RAV.650N1.193742, RAV.650N2.193858, RAV.650N2.193520, RAV.650N2.193667, RAV.650N6.193964, RAV.650N5.193902, RAV.660N2.193360, RAV.650N5.193018, RAV.650N6.193025, RAV.640N5.193049, RAV.640N4.192998, RAV.640N3.192981, RAV.650N2.193384 and RAV.650N5.193919 | 1 set / 4 pieces


Rubber pads

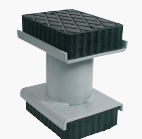
S505A9

60 mm | suitable for RAV.640N1.193391, RAV.650N1.193742, RAV.650N6.193964, RAV.660N2.193360, RAV.650N6.193025, RAV.640N5.193049 and RAV.640N4.192998 | 1 set / 4 pieces


Rubber pads

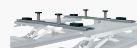
S505A5

120 mm | suitable for RAV.640N1.193391, RAV.650N1.193742, RAV.650N2.193858, RAV.650N2.193520, RAV.650N2.193667, RAV.650N6.193964, RAV.650N5.193902, RAV.660N2.193360, RAV.650N5.193018, RAV.650N6.193025, RAV.640N5.193049, RAV.640N4.192998, RAV.640N3.192981, RAV.650N2.193384 and RAV.650N5.193919 | 1 set / 4 pieces


Rubber pads

S505A1

200 mm | suitable for RAV.640N1.193391, RAV.650N1.193742, RAV.650N2.193858, RAV.650N2.193520, RAV.650N2.193667, RAV.650N6.193964, RAV.650N5.193902, RAV.660N2.193360, RAV.650N5.193018, RAV.650N6.193025, RAV.640N5.193049, RAV.640N4.192998, RAV.640N3.192981, RAV.650N2.193384 and RAV.650N5.193919 | 1 set / 4 pieces


Traverses for XS30-CAT

S505A2

For vans and off-road vehicles | 1 set / 2 pieces

TECHNICAL DETAILS

Number of columns	4
Mode of drive	Electrohydraulic
Control	Electric
Type of installation	Floor mounted
Capacity	6500kg
Max. lifting height	1915mm
Drive-on-height	200mm
Clear span between	3300mm
Clear span between (out)	3780mm
Column height	2874mm
Drive-through width	2810mm
Wheel alignment	Optional
Length of platforms	5700mm
Width of platforms	650mm
Space of platforms	900mm
Length with drive-on ramp	6674mm
Driving power	2,6kW
Country of Origin, customs	IT