



4-post lift RAV4502LSIQ

GTIN: 5063084194695

SKU: RAV.4502L.194695

5.0 t, electrohydraulic, symmetrical, track length 5700 mm, with wheel-free jack and wheel alignment, above ground

DESCRIPTION

- The hydraulic cylinder is located inside the fixed platform and is thus perfectly protected
- High-resistant, galvanised and pre-stretched metal cables
- Large-diameter pulleys with self-lubricating and maintenance-free bushes
- Automatic mechanical back-up safety devices (every 100 mm) with pneumatic release allowing stationary operation with unladen cables
- Immediate-triggering safety stud devices in case a cable slackens or fails
- Automatic anti-toe trap alarm during final stages of lift descent
- Mechanical, electrical and hydraulic safety devices in compliance with the prevailing standard for CE marking
- Low-voltage (24 V) electrical system with control circuit

- Extra-long platforms for total wheel alignment with front turntables locations and rear slip plates
- Electro-hydraulic wheel-free jack featuring adjustable platforms and up/down movements hydraulically synchronised
- Wheel-alignment lifts complete with wheel-free jack are the perfect solution for the vehicle total wheel alignment check

ACCESSORIES

Jacking beam J17X

VSG.J17XX.901989

2.0 t, Hydraulic, with hand-pump | for all hydraulic 4-post lifts / scissor lifts


Jacking beam J20NX

VSG.J20NX.901941

2.0 t, hydraulic, operated by means of hand-pump


Jacking beam J20PNX

VSG.J20PN.901767

2.0 t, air-hydraulic


Jacking beam J20PNXL

VSG.J20PN.901682

2.0 t, air-hydraulic


Jacking beam J20PNR

VSG.J20PN.901583

2.0 t, air-hydraulic


Jacking beam J20PNRL

VSG.J20PN.901422

2.0 t, air-hydraulic


Jacking beam J30PKL

VSG.J30PK.902368

3.0 t, air-hydraulic


Jacking beam J30X

VSG.J30XX.901514

3.0 t, hydraulic, operated by means of hand-pump


Jacking beam J30PX

VSG.J30PX.901781

3.0 t, air-hydraulic


Jacking beam J30PXL

VSG.J30PX.901804

3.0 t, air-hydraulic


Jacking beam J30PR

VSG.J30PR.901392

3.0 t, air-hydraulic


Jacking beam J30PRL

VSG.J30PR.901828

3.0 t, air-hydraulic


Jacking beam J40PRL

VSG.J40PR.901965

4.0 t, air-hydraulic


Jacking beam J40PXL

VSG.J40PX.902191

4.0 t, air-hydraulic


Jacking beam J40PKL

VSG.J40PK.901880

4.0 t, air-hydraulic


Jacking beam J40PY

VSG.J40PY.902214

4.0 t, air-hydraulic


Jacking beam J50PHT

VSG.J50PH.902238

5 t, 392 mm stroke, air-hydraulic, telescopic jack, roller bearings in the track, air supply on site


Jacking beam J50PHA

VSG.J50PH.902177

5.0 t, air-hydraulic

ACCESSORIES

Drive-on ramp kit

S4502LSIA2

 Long, 1500 mm | for 4-post lifts
 RAV4406LSI, RAV4502LSI | 1 pair

Drive-through ramp kit

S4502LSIA1

For RAV4406L, RAV4502L | 1 set / 2 pieces


Post covers for 4-post lift

S401A8


Rubber pads

S505A7

 20 mm | suitable for RAV.640N1.193391,
 RAV.650N1.193742, RAV.650N2.193858,
 RAV.650N2.193520, RAV.650N2.193667,
 RAV.650N6.193964, RAV.650N5.193902,
 RAV.660N2.193360, RAV.650N5.193018,
 RAV.650N6.193025, RAV.640N5.193049,
 RAV.640N4.192998, RAV.640N3.192981,
 RAV.650N2.193384 and RAV.650N5.193919 |
 1 set / 4 pieces

Rubber pads

S505A6

 40 mm | suitable for RAV.640N1.193391,
 RAV.650N1.193742, RAV.650N2.193858,
 RAV.650N2.193520, RAV.650N2.193667,
 RAV.650N6.193964, RAV.650N5.193902,
 RAV.660N2.193360, RAV.650N5.193018,
 RAV.650N6.193025, RAV.640N5.193049,
 RAV.640N4.192998, RAV.640N3.192981,
 RAV.650N2.193384 and RAV.650N5.193919 |
 1 set / 4 pieces

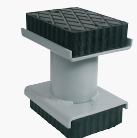
Rubber pads

S505A9

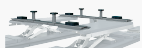
 60 mm | suitable for RAV.640N1.193391,
 RAV.650N1.193742, RAV.650N6.193964,
 RAV.660N2.193360, RAV.650N6.193025,
 RAV.640N5.193049 and RAV.640N4.192998 |
 1 set / 4 pieces

Rubber pads

S505A5

 120 mm | suitable for RAV.640N1.193391,
 RAV.650N1.193742, RAV.650N2.193858,
 RAV.650N2.193520, RAV.650N2.193667,
 RAV.650N6.193964, RAV.650N5.193902,
 RAV.660N2.193360, RAV.650N5.193018,
 RAV.650N6.193025, RAV.640N5.193049,
 RAV.640N4.192998, RAV.640N3.192981,
 RAV.650N2.193384 and RAV.650N5.193919 |
 1 set / 4 pieces

Rubber pads

S505A1

 200 mm | suitable for RAV.640N1.193391,
 RAV.650N1.193742, RAV.650N2.193858,
 RAV.650N2.193520, RAV.650N2.193667,
 RAV.650N6.193964, RAV.650N5.193902,
 RAV.660N2.193360, RAV.650N5.193018,
 RAV.650N6.193025, RAV.640N5.193049,
 RAV.640N4.192998, RAV.640N3.192981,
 RAV.650N2.193384 and RAV.650N5.193919 |
 1 set / 4 pieces

Traverses for XS30-CAT

S505A2

 For vans and off-road vehicles | 1 set / 2
 pieces

TECHNICAL DETAILS

Number of columns	4
Mode of drive	Electrohydraulic
Control	Electric
Type of installation	Floor mounted
Capacity	5000kg
Max. lifting height	1965mm
Drive-on-height	230mm
Clear span between	3000mm
Clear span between (out)	3355mm
Column height	2300mm
Drive-through width	2645mm
Wheel alignment	Standard
Length of platforms	5700mm
Width of platforms	650mm
Space of platforms	776-940mm
Length with drive-on ramp	6767mm
Wheel free lift	Standard
Driving power	2,6kW
Country of Origin, customs	IT