



## **4-post lift RAV4502LSI**

GTIN: 5063084194640

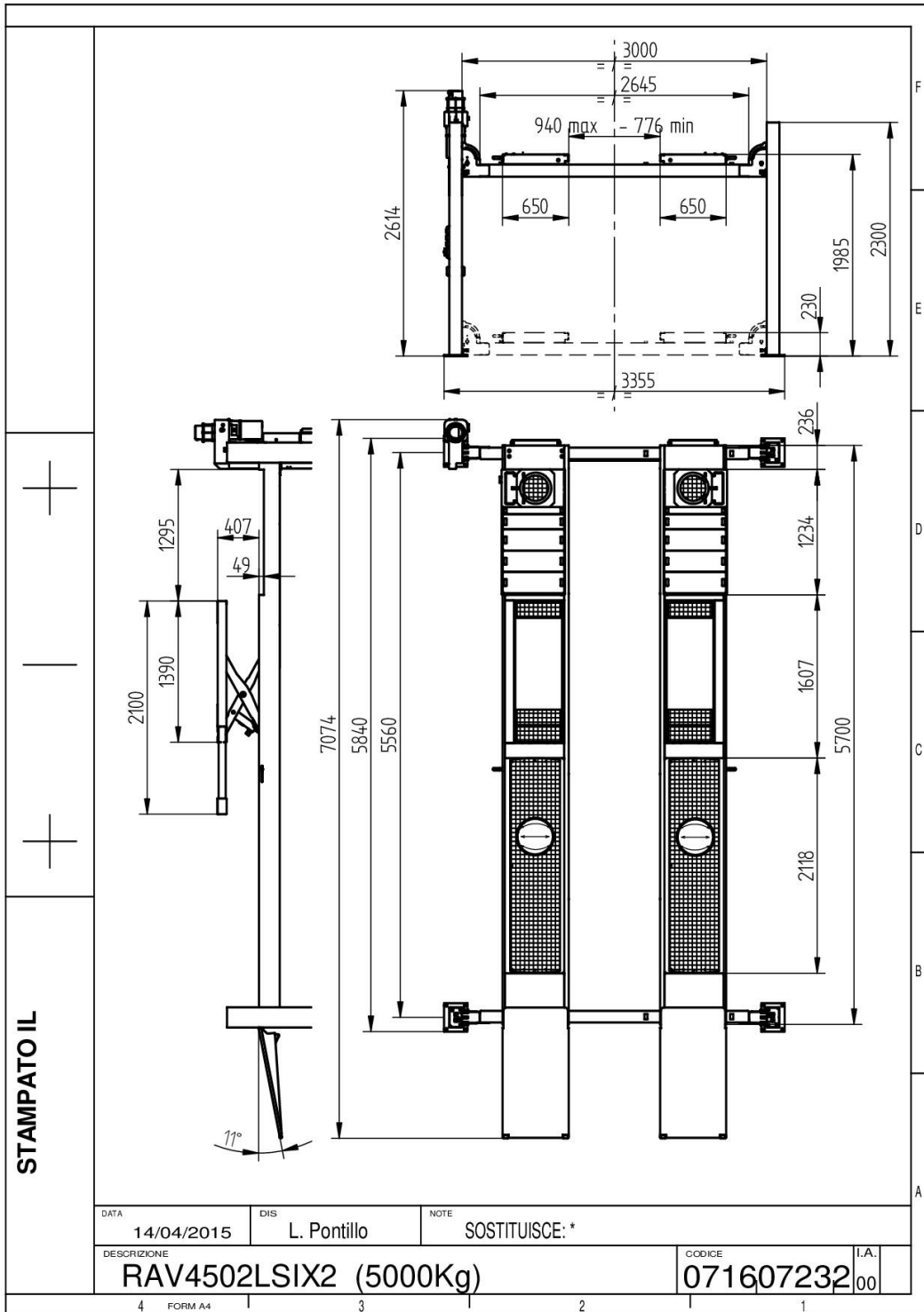
SKU: RAV.4502L.194640

5.0 t, electrohydraulic, symmetrical, track length 5700 mm, with wheel-free jack and wheel alignment, above ground | Blue (RAL 5005)

---

### **DESCRIPTION**

- The hydraulic cylinder is located inside the fixed platform and is thus perfectly protected
  - High-resistant, galvanised and pre-stretched metal cables
  - Large-diameter pulleys with self-lubricating and maintenance-free bushes
  - Automatic mechanical back-up safety devices (every 100 mm) with pneumatic release allowing stationary operation with unladen cables
  - Immediate-triggering safety stud devices in case a cable slackens or fails
  - Automatic anti-toe trap alarm during final stages of lift descent
  - Mechanical, electrical and hydraulic safety devices in compliance with the prevailing standard for CE marking
  - Low-voltage (24 V) electrical system with control circuit
- 
- Extra-long platforms for total wheel alignment with front turntables locations and rear slip plates
  - Electro-hydraulic wheel-free jack featuring adjustable platforms and up/down movements hydraulically synchronised
  - Wheel-alignment lifts complete with wheel-free jack are the perfect solution for the vehicle total wheel alignment check



**ACCESSORIES**

**Jacking beam J17X**

VSG.J17XX.901989

2.0 t, Hydraulic, with hand-pump | for all hydraulic 4-post lifts / scissor lifts


**Jacking beam J20NX**

VSG.J20NX.901941

2.0 t, hydraulic, operated by means of hand-pump


**Jacking beam J20PNX**

VSG.J20PN.901767

2.0 t, air-hydraulic


**Jacking beam J20PNXL**

VSG.J20PN.901682

2.0 t, air-hydraulic


**Jacking beam J20PNR**

VSG.J20PN.901583

2.0 t, air-hydraulic


**Jacking beam J20PNRL**

VSG.J20PN.901422

2.0 t, air-hydraulic


**Jacking beam J30PKL**

VSG.J30PK.902368

3.0 t, air-hydraulic


**Jacking beam J30X**

VSG.J30XX.901514

3.0 t, hydraulic, operated by means of hand-pump


**Jacking beam J30PX**

VSG.J30PX.901781

3.0 t, air-hydraulic


**Jacking beam J30PXL**

VSG.J30PX.901804

3.0 t, air-hydraulic


**Jacking beam J30PR**

VSG.J30PR.901392

3.0 t, air-hydraulic


**Jacking beam J30PRL**

VSG.J30PR.901828

3.0 t, air-hydraulic


**Jacking beam J40PRL**

VSG.J40PR.901965

4.0 t, air-hydraulic


**Jacking beam J40PXL**

VSG.J40PX.902191

4.0 t, air-hydraulic


**Jacking beam J40PKL**

VSG.J40PK.901880

4.0 t, air-hydraulic


**Jacking beam J40PY**

VSG.J40PY.902214

4.0 t, air-hydraulic


**Jacking beam J50PHT**

VSG.J50PH.902238

5 t, 392 mm stroke, air-hydraulic, telescopic jack, roller bearings in the track, air supply on site


**Jacking beam J50PHA**

VSG.J50PH.902177

5.0 t, air-hydraulic

**ACCESSORIES**

**Drive-on ramp kit**

S4502LSIA2

 Long, 1500 mm | for 4-post lifts  
 RAV4406LSI, RAV4502LSI | 1 pair

**Drive-through ramp kit**

S4502LSIA1

For RAV4406L, RAV4502L | 1 set / 2 pieces


**Post covers for 4-post lift**

S401A8


**Rubber pads**

S505A7

 20 mm | suitable for RAV.640N1.193391,  
 RAV.650N1.193742, RAV.650N2.193858,  
 RAV.650N2.193520, RAV.650N2.193667,  
 RAV.650N6.193964, RAV.650N5.193902,  
 RAV.660N2.193360, RAV.650N5.193018,  
 RAV.650N6.193025, RAV.640N5.193049,  
 RAV.640N4.192998, RAV.640N3.192981,  
 RAV.650N2.193384 and RAV.650N5.193919 |  
 1 set / 4 pieces

**Rubber pads**

S505A6

 40 mm | suitable for RAV.640N1.193391,  
 RAV.650N1.193742, RAV.650N2.193858,  
 RAV.650N2.193520, RAV.650N2.193667,  
 RAV.650N6.193964, RAV.650N5.193902,  
 RAV.660N2.193360, RAV.650N5.193018,  
 RAV.650N6.193025, RAV.640N5.193049,  
 RAV.640N4.192998, RAV.640N3.192981,  
 RAV.650N2.193384 and RAV.650N5.193919 |  
 1 set / 4 pieces

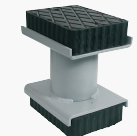
**Rubber pads**

S505A9

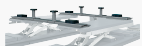
 60 mm | suitable for RAV.640N1.193391,  
 RAV.650N1.193742, RAV.650N6.193964,  
 RAV.660N2.193360, RAV.650N6.193025,  
 RAV.640N5.193049 and RAV.640N4.192998 |  
 1 set / 4 pieces

**Rubber pads**

S505A5

 120 mm | suitable for RAV.640N1.193391,  
 RAV.650N1.193742, RAV.650N2.193858,  
 RAV.650N2.193520, RAV.650N2.193667,  
 RAV.650N6.193964, RAV.650N5.193902,  
 RAV.660N2.193360, RAV.650N5.193018,  
 RAV.650N6.193025, RAV.640N5.193049,  
 RAV.640N4.192998, RAV.640N3.192981,  
 RAV.650N2.193384 and RAV.650N5.193919 |  
 1 set / 4 pieces

**Rubber pads**

S505A1

 200 mm | suitable for RAV.640N1.193391,  
 RAV.650N1.193742, RAV.650N2.193858,  
 RAV.650N2.193520, RAV.650N2.193667,  
 RAV.650N6.193964, RAV.650N5.193902,  
 RAV.660N2.193360, RAV.650N5.193018,  
 RAV.650N6.193025, RAV.640N5.193049,  
 RAV.640N4.192998, RAV.640N3.192981,  
 RAV.650N2.193384 and RAV.650N5.193919 |  
 1 set / 4 pieces

**Traverses for XS30-CAT**

S505A2

 For vans and off-road vehicles | 1 set / 2  
 pieces

**TECHNICAL DETAILS**

<b>Number of columns</b>	4
<b>Mode of drive</b>	Electrohydraulic
<b>Control</b>	Electric
<b>Type of installation</b>	Floor mounted
<b>Capacity</b>	5000kg
<b>Max. lifting height</b>	1965mm
<b>Drive-on-height</b>	230mm
<b>Clear span between</b>	3000mm
<b>Clear span between (out)</b>	3355mm
<b>Column height</b>	2300mm
<b>Drive-through width</b>	2645mm
<b>Wheel alignment</b>	Standard
<b>Length of platforms</b>	5700mm
<b>Width of platforms</b>	650mm
<b>Space of platforms</b>	776 - 940mm
<b>Length with drive-on ramp</b>	6767mm
<b>Set-up length with drive-on ramps</b>	7074
<b>Wheel free lift</b>	Standard
<b>Driving power</b>	2,6kW
<b>Electrical connection</b>	230/400 V, 50 Hz
<b>Phases</b>	3
<b>Weight</b>	1700kg
<b>Country of Origin, customs</b>	IT