



4-post lift RAV4501L

GTIN: 5063084194251

SKU: RAV.4501L.194251

5.0 t, electrohydraulic, symmetrical, with level runways, track length 5700 mm, above ground | Blue (RAL 5005)

DESCRIPTION

- The hydraulic cylinder is located inside the fixed platform and is thus perfectly protected
 - High-resistant, galvanised and pre-stretched metal cables
 - Large-diameter pulleys with self-lubricating and maintenance-free bushes
 - Automatic mechanical back-up safety devices (every 100 mm) with pneumatic release allowing stationary operation with unladen cables
 - Immediate-triggering safety stud devices in case a cable slackens or fails
 - Automatic anti-toe trap alarm during final stages of lift descent
 - Mechanical, electrical and hydraulic safety devices in compliance with the prevailing standard for CE marking
 - Low-voltage (24 V) electrical system with control circuit
-
- Version with flat platforms

ACCESSORIES

Jacking beam J17X

VSG.J17XX.901989

2.0 t, Hydraulic, with hand-pump | for all hydraulic 4-post lifts / scissor lifts


Jacking beam J20NX

VSG.J20NX.901941

2.0 t, hydraulic, operated by means of hand-pump


Jacking beam J20PNX

VSG.J20PN.901767

2.0 t, air-hydraulic


Jacking beam J20PNXL

VSG.J20PN.901682

2.0 t, air-hydraulic


Jacking beam J20PNR

VSG.J20PN.901583

2.0 t, air-hydraulic


Jacking beam J20PNRL

VSG.J20PN.901422

2.0 t, air-hydraulic


Jacking beam J30PKL

VSG.J30PK.902368

3.0 t, air-hydraulic


Jacking beam J30X

VSG.J30XX.901514

3.0 t, hydraulic, operated by means of hand-pump


Jacking beam J30PX

VSG.J30PX.901781

3.0 t, air-hydraulic


Jacking beam J30PXL

VSG.J30PX.901804

3.0 t, air-hydraulic


Jacking beam J30PR

VSG.J30PR.901392

3.0 t, air-hydraulic


Jacking beam J30PRL

VSG.J30PR.901828

3.0 t, air-hydraulic


Jacking beam J40PRL

VSG.J40PR.901965

4.0 t, air-hydraulic


Jacking beam J40PXL

VSG.J40PX.902191

4.0 t, air-hydraulic


Jacking beam J40PKL

VSG.J40PK.901880

4.0 t, air-hydraulic


Jacking beam J40PY

VSG.J40PY.902214

4.0 t, air-hydraulic


Jacking beam J50PHT

VSG.J50PH.902238

5 t, 392 mm stroke, air-hydraulic, telescopic jack, roller bearings in the track, air supply on site


Jacking beam J50PHA

VSG.J50PH.902177

5.0 t, air-hydraulic

ACCESSORIES

Drive-on ramp kit

S4405LA2

 Long, 1000 mm | for 4-post lifts
 RAV4405L, RAV4405LSI, RAV4501L | 1 pair

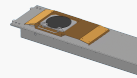
Drive-through ramp kit

S4405LA1

For RAV4405L, RAV4405LSI, RAV4501L | 1 set / 2 pieces


Post covers for 4-post lift

S401A8


Seat for turntables | plates and slip plates excluded | 1 set

STDA140

For RAV4350, RAV4401, RAV4405L, RAV4501L, RAV4651L, RAV4800


Rubber pads

S505A7

20 mm | suitable for RAV.640N1.193391, RAV.650N1.193742, RAV.650N2.193858, RAV.650N2.193520, RAV.650N2.193667, RAV.650N6.193964, RAV.650N5.193902, RAV.660N2.193360, RAV.650N5.193018, RAV.650N6.193025, RAV.640N5.193049, RAV.640N4.192998, RAV.640N3.192981, RAV.650N2.193384 and RAV.650N5.193919 | 1 set / 4 pieces


Rubber pads

S505A6

40 mm | suitable for RAV.640N1.193391, RAV.650N1.193742, RAV.650N2.193858, RAV.650N2.193520, RAV.650N2.193667, RAV.650N6.193964, RAV.650N5.193902, RAV.660N2.193360, RAV.650N5.193018, RAV.650N6.193025, RAV.640N5.193049, RAV.640N4.192998, RAV.640N3.192981, RAV.650N2.193384 and RAV.650N5.193919 | 1 set / 4 pieces


Rubber pads

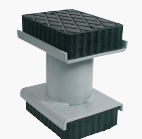
S505A9

60 mm | suitable for RAV.640N1.193391, RAV.650N1.193742, RAV.650N6.193964, RAV.660N2.193360, RAV.650N6.193025, RAV.640N5.193049 and RAV.640N4.192998 | 1 set / 4 pieces


Rubber pads

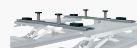
S505A5

120 mm | suitable for RAV.640N1.193391, RAV.650N1.193742, RAV.650N2.193858, RAV.650N2.193520, RAV.650N2.193667, RAV.650N6.193964, RAV.650N5.193902, RAV.660N2.193360, RAV.650N5.193018, RAV.650N6.193025, RAV.640N5.193049, RAV.640N4.192998, RAV.640N3.192981, RAV.650N2.193384 and RAV.650N5.193919 | 1 set / 4 pieces


Rubber pads

S505A1

200 mm | suitable for RAV.640N1.193391, RAV.650N1.193742, RAV.650N2.193858, RAV.650N2.193520, RAV.650N2.193667, RAV.650N6.193964, RAV.650N5.193902, RAV.660N2.193360, RAV.650N5.193018, RAV.650N6.193025, RAV.640N5.193049, RAV.640N4.192998, RAV.640N3.192981, RAV.650N2.193384 and RAV.650N5.193919 | 1 set / 4 pieces


Traverses for XS30-CAT

S505A2

For vans and off-road vehicles | 1 set / 2 pieces

TECHNICAL DETAILS

Number of columns	4
Mode of drive	Electrohydraulic
Control	Electric
Type of installation	Floor mounted
Capacity	5000kg
Max. lifting height	1915mm
Drive-on-height	160mm
Clear span between	3000mm
Clear span between (out)	3355mm
Column height	2614mm
Drive-through width	2645mm
Wheel alignment	Optional
Length of platforms	5700mm
Width of platforms	650mm
Space of platforms	776 - 940mm
Length with drive-on ramp	6707mm
Driving power	2,6kW
Electrical connection	230/400 V, 50 Hz
Phases	3
Country of Origin, customs	IT