



## **4-post lift RAV4406LSI**

GTIN: 5063084194886

SKU: RAV.4406L.194886

4.0 t, electrohydraulic, symmetrical, track length 5100 mm, with wheel-free jack and wheel alignment, above ground | Blue (RAL 5005)

---

### **DESCRIPTION**

- The hydraulic cylinder is located inside the fixed platform and is thus perfectly protected
- High-resistant, galvanised and pre-stretched metal cables
- Large-diameter pulleys with self-lubricating and maintenance-free bushes
- Automatic mechanical back-up safety devices (every 100 mm) with pneumatic release allowing stationary operation with unladen cables
- Immediate-triggering safety stud devices in case a cable slackens or fails
- Automatic anti-toe trap alarm during final stages of lift descent
- Mechanical, electrical and hydraulic safety devices in compliance with the prevailing standard for CE marking
- Low-voltage (24 V) electrical system with control circuit
  
- Extra-long platforms for total wheel alignment with front turntables locations and rear slip plates
- Electro-hydraulic wheel-free jack featuring adjustable platforms and up/down movements hydraulically synchronised
- Wheel-alignment lifts complete with wheel-free jack are the perfect solution for the vehicle total wheel alignment check

**ACCESSORIES**


**Jacking beam J17X**  
 VSG.J17XX.901989  
 2.0 t, Hydraulic, with hand-pump | for all hydraulic 4-post lifts / scissor lifts



**Jacking beam J20NX**  
 VSG.J20NX.901941  
 2.0 t, hydraulic, operated by means of hand-pump



**Jacking beam J20PNX**  
 VSG.J20PN.901767  
 2.0 t, air-hydraulic



**Jacking beam J20PNXL**  
 VSG.J20PN.901682  
 2.0 t, air-hydraulic



**Jacking beam J20PNR**  
 VSG.J20PN.901583  
 2.0 t, air-hydraulic



**Jacking beam J20PNRL**  
 VSG.J20PN.901422  
 2.0 t, air-hydraulic



**Jacking beam J30PKL**  
 VSG.J30PK.902368  
 3.0 t, air-hydraulic



**Jacking beam J30X**  
 VSG.J30XX.901514  
 3.0 t, hydraulic, operated by means of hand-pump



**Jacking beam J30PX**  
 VSG.J30PX.901781  
 3.0 t, air-hydraulic



**Jacking beam J30PXL**  
 VSG.J30PX.901804  
 3.0 t, air-hydraulic



**Jacking beam J30PR**  
 VSG.J30PR.901392  
 3.0 t, air-hydraulic



**Jacking beam J30PRL**  
 VSG.J30PR.901828  
 3.0 t, air-hydraulic



**Jacking beam J40PRL**  
 VSG.J40PR.901965  
 4.0 t, air-hydraulic



**Jacking beam J40PXL**  
 VSG.J40PX.902191  
 4.0 t, air-hydraulic



**Jacking beam J40PKL**  
 VSG.J40PK.901880  
 4.0 t, air-hydraulic



**Jacking beam J40PY**  
 VSG.J40PY.902214  
 4.0 t, air-hydraulic



**Jacking beam J50PHT**  
 VSG.J50PH.902238  
 5 t, 392 mm stroke, air-hydraulic, telescopic jack, roller bearings in the track, air supply on site



**Jacking beam J50PHA**  
 VSG.J50PH.902177  
 5.0 t, air-hydraulic

**ACCESSORIES**

**Drive-on ramp kit**

S4502LSIA2

 Long, 1500 mm | for 4-post lifts  
 RAV4406LSI, RAV4502LSI | 1 pair

**Drive-through ramp kit**

S4502LSIA1

For RAV4406L, RAV4502L | 1 set / 2 pieces


**Post covers for 4-post lift**

S401A8


**Rubber pads**

S505A7

 20 mm | suitable for RAV.640N1.193391,  
 RAV.650N1.193742, RAV.650N2.193858,  
 RAV.650N2.193520, RAV.650N2.193667,  
 RAV.650N6.193964, RAV.650N5.193902,  
 RAV.660N2.193360, RAV.650N5.193018,  
 RAV.650N6.193025, RAV.640N5.193049,  
 RAV.640N4.192998, RAV.640N3.192981,  
 RAV.650N2.193384 and RAV.650N5.193919 |  
 1 set / 4 pieces

**Rubber pads**

S505A6

 40 mm | suitable for RAV.640N1.193391,  
 RAV.650N1.193742, RAV.650N2.193858,  
 RAV.650N2.193520, RAV.650N2.193667,  
 RAV.650N6.193964, RAV.650N5.193902,  
 RAV.660N2.193360, RAV.650N5.193018,  
 RAV.650N6.193025, RAV.640N5.193049,  
 RAV.640N4.192998, RAV.640N3.192981,  
 RAV.650N2.193384 and RAV.650N5.193919 |  
 1 set / 4 pieces

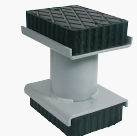
**Rubber pads**

S505A9

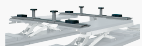
 60 mm | suitable for RAV.640N1.193391,  
 RAV.650N1.193742, RAV.650N6.193964,  
 RAV.660N2.193360, RAV.650N6.193025,  
 RAV.640N5.193049 and RAV.640N4.192998 |  
 1 set / 4 pieces

**Rubber pads**

S505A5

 120 mm | suitable for RAV.640N1.193391,  
 RAV.650N1.193742, RAV.650N2.193858,  
 RAV.650N2.193520, RAV.650N2.193667,  
 RAV.650N6.193964, RAV.650N5.193902,  
 RAV.660N2.193360, RAV.650N5.193018,  
 RAV.650N6.193025, RAV.640N5.193049,  
 RAV.640N4.192998, RAV.640N3.192981,  
 RAV.650N2.193384 and RAV.650N5.193919 |  
 1 set / 4 pieces

**Rubber pads**

S505A1

 200 mm | suitable for RAV.640N1.193391,  
 RAV.650N1.193742, RAV.650N2.193858,  
 RAV.650N2.193520, RAV.650N2.193667,  
 RAV.650N6.193964, RAV.650N5.193902,  
 RAV.660N2.193360, RAV.650N5.193018,  
 RAV.650N6.193025, RAV.640N5.193049,  
 RAV.640N4.192998, RAV.640N3.192981,  
 RAV.650N2.193384 and RAV.650N5.193919 |  
 1 set / 4 pieces

**Traverses for XS30-CAT**

S505A2

 For vans and off-road vehicles | 1 set / 2  
 pieces

**TECHNICAL DETAILS**

|                                   |                  |
|-----------------------------------|------------------|
| <b>Number of columns</b>          | 4                |
| <b>Mode of drive</b>              | Electrohydraulic |
| <b>Control</b>                    | Electric         |
| <b>Type of installation</b>       | Floor mounted    |
| <b>Capacity</b>                   | 4000kg           |
| <b>Max. lifting height</b>        | 1965mm           |
| <b>Drive-on-height</b>            | 230mm            |
| <b>Clear span between</b>         | 3000mm           |
| <b>Clear span between (out)</b>   | 3355mm           |
| <b>Column height</b>              | 2300mm           |
| <b>Drive-through width</b>        | 2670mm           |
| <b>Wheel alignment</b>            | Standard         |
| <b>Length of platforms</b>        | 5100mm           |
| <b>Width of platforms</b>         | 650mm            |
| <b>Space of platforms</b>         | 845 - 1045mm     |
| <b>Wheel free lift</b>            | Standard         |
| <b>Driving power</b>              | 2,6kW            |
| <b>Electrical connection</b>      | 230/400 V, 50 Hz |
| <b>Phases</b>                     | 3                |
| <b>Country of Origin, customs</b> | IT               |