



4-post lift RAV4406L

GTIN: 5063084194992

SKU: RAV.4406L.194992

4.0 t, electrohydraulic, symmetrical, track length 5100 mm, with wheel alignment, above ground | Blue (RAL 5005)

DESCRIPTION

- The hydraulic cylinder is located inside the fixed platform and is thus perfectly protected
- High-resistant, galvanised and pre-stretched metal cables
- Large-diameter pulleys with self-lubricating and maintenance-free bushes
- Automatic mechanical back-up safety devices (every 100 mm) with pneumatic release allowing stationary operation with unladen cables
- Immediate-triggering safety stud devices in case a cable slackens or fails
- Automatic anti-toe trap alarm during final stages of lift descent
- Mechanical, electrical and hydraulic safety devices in compliance with the prevailing standard for CE marking
- Low-voltage (24 V) electrical system with control circuit

- Extra-long platforms for total wheel alignment with front turntables locations and rear slip plates

ACCESSORIES


Jacking beam J17X
 VSG.J17XX.901989
 2.0 t, Hydraulic, with hand-pump | for all hydraulic 4-post lifts / scissor lifts



Jacking beam J20NX
 VSG.J20NX.901941
 2.0 t, hydraulic, operated by means of hand-pump



Jacking beam J20PNX
 VSG.J20PN.901767
 2.0 t, air-hydraulic



Jacking beam J20PNXL
 VSG.J20PN.901682
 2.0 t, air-hydraulic



Jacking beam J20PNR
 VSG.J20PN.901583
 2.0 t, air-hydraulic



Jacking beam J20PNRL
 VSG.J20PN.901422
 2.0 t, air-hydraulic



Jacking beam J30PKL
 VSG.J30PK.902368
 3.0 t, air-hydraulic



Jacking beam J30X
 VSG.J30XX.901514
 3.0 t, hydraulic, operated by means of hand-pump



Jacking beam J30PX
 VSG.J30PX.901781
 3.0 t, air-hydraulic



Jacking beam J30PXL
 VSG.J30PX.901804
 3.0 t, air-hydraulic



Jacking beam J30PR
 VSG.J30PR.901392
 3.0 t, air-hydraulic



Jacking beam J30PRL
 VSG.J30PR.901828
 3.0 t, air-hydraulic



Jacking beam J40PRL
 VSG.J40PR.901965
 4.0 t, air-hydraulic



Jacking beam J40PXL
 VSG.J40PX.902191
 4.0 t, air-hydraulic



Jacking beam J40PKL
 VSG.J40PK.901880
 4.0 t, air-hydraulic



Jacking beam J40PY
 VSG.J40PY.902214
 4.0 t, air-hydraulic



Jacking beam J50PHT
 VSG.J50PH.902238
 5 t, 392 mm stroke, air-hydraulic, telescopic jack, roller bearings in the track, air supply on site



Jacking beam J50PHA
 VSG.J50PH.902177
 5.0 t, air-hydraulic

ACCESSORIES

Drive-on ramp kit

S4406LA4

 Long, 1500 mm | for 4-post lifts
 RAV4406L, RAV4502L | 1 pair

Drive-through ramp kit

S4406LA3

For RAV4406L, RAV4502L | 1 set / 2 pieces


Post covers for 4-post lift

S401A8


Rubber pads

S505A7

 20 mm | suitable for RAV.640N1.193391,
 RAV.650N1.193742, RAV.650N2.193858,
 RAV.650N2.193520, RAV.650N2.193667,
 RAV.650N6.193964, RAV.650N5.193902,
 RAV.660N2.193360, RAV.650N5.193018,
 RAV.650N6.193025, RAV.640N5.193049,
 RAV.640N4.192998, RAV.640N3.192981,
 RAV.650N2.193384 and RAV.650N5.193919 |
 1 set / 4 pieces

Rubber pads

S505A6

 40 mm | suitable for RAV.640N1.193391,
 RAV.650N1.193742, RAV.650N2.193858,
 RAV.650N2.193520, RAV.650N2.193667,
 RAV.650N6.193964, RAV.650N5.193902,
 RAV.660N2.193360, RAV.650N5.193018,
 RAV.650N6.193025, RAV.640N5.193049,
 RAV.640N4.192998, RAV.640N3.192981,
 RAV.650N2.193384 and RAV.650N5.193919 |
 1 set / 4 pieces

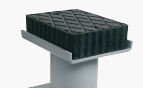
Rubber pads

S505A9

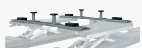
 60 mm | suitable for RAV.640N1.193391,
 RAV.650N1.193742, RAV.650N6.193964,
 RAV.660N2.193360, RAV.650N6.193025,
 RAV.640N5.193049 and RAV.640N4.192998 |
 1 set / 4 pieces

Rubber pads

S505A5

 120 mm | suitable for RAV.640N1.193391,
 RAV.650N1.193742, RAV.650N2.193858,
 RAV.650N2.193520, RAV.650N2.193667,
 RAV.650N6.193964, RAV.650N5.193902,
 RAV.660N2.193360, RAV.650N5.193018,
 RAV.650N6.193025, RAV.640N5.193049,
 RAV.640N4.192998, RAV.640N3.192981,
 RAV.650N2.193384 and RAV.650N5.193919 |
 1 set / 4 pieces

Rubber pads

S505A1

 200 mm | suitable for RAV.640N1.193391,
 RAV.650N1.193742, RAV.650N2.193858,
 RAV.650N2.193520, RAV.650N2.193667,
 RAV.650N6.193964, RAV.650N5.193902,
 RAV.660N2.193360, RAV.650N5.193018,
 RAV.650N6.193025, RAV.640N5.193049,
 RAV.640N4.192998, RAV.640N3.192981,
 RAV.650N2.193384 and RAV.650N5.193919 |
 1 set / 4 pieces

Traverses for XS30-CAT

S505A2

 For vans and off-road vehicles | 1 set / 2
 pieces

TECHNICAL DETAILS

Number of columns	4
Mode of drive	Electrohydraulic
Control	Electric
Type of installation	Floor mounted
Capacity	4000kg
Max. lifting height	1965mm
Drive-on-height	210mm
Clear span between	3000mm
Clear span between (out)	3355mm
Column height	2300mm
Drive-through width	2670mm
Wheel alignment	Standard
Length of platforms	5100mm
Width of platforms	650mm
Space of platforms	825-1045mm
Driving power	2,6kW
Electrical connection	230/400 V, 50 Hz
Phases	3
Country of Origin, customs	IT