



4-post lift RAV4401Q

GTIN: 5063084194329

SKU: RAV.4401X.194329

4.0 t, electrohydraulic, symmetrical, with level runways, track length 4460 mm, wheel alignment optional, above ground, TEq-Link

DESCRIPTION

- The hydraulic cylinder is located inside the fixed platform and is thus perfectly protected
 - High-resistant, galvanised and pre-stretched metal cables
 - Large-diameter pulleys with self-lubricating and maintenance-free bushes
 - Automatic mechanical back-up safety devices (every 100 mm) with pneumatic release allowing stationary operation with unladen cables
 - Immediate-triggering safety stud devices in case a cable slackens or fails
 - Automatic anti-toe trap alarm during final stages of lift descent
 - Mechanical, electrical and hydraulic safety devices in compliance with the prevailing standard for CE marking
 - Low-voltage (24 V) electrical system with control circuit
-
- Version with flat platforms

ACCESSORIES


Jacking beam J17X
 VSG.J17XX.901989
 2.0 t, Hydraulic, with hand-pump | for all hydraulic 4-post lifts / scissor lifts



Jacking beam J20NX
 VSG.J20NX.901941
 2.0 t, hydraulic, operated by means of hand-pump



Jacking beam J20PNX
 VSG.J20PN.901767
 2.0 t, air-hydraulic



Jacking beam J20PNXL
 VSG.J20PN.901682
 2.0 t, air-hydraulic



Jacking beam J20PNR
 VSG.J20PN.901583
 2.0 t, air-hydraulic



Jacking beam J20PNRL
 VSG.J20PN.901422
 2.0 t, air-hydraulic



Jacking beam J30PKL
 VSG.J30PK.902368
 3.0 t, air-hydraulic



Jacking beam J30X
 VSG.J30XX.901514
 3.0 t, hydraulic, operated by means of hand-pump



Jacking beam J30PX
 VSG.J30PX.901781
 3.0 t, air-hydraulic



Jacking beam J30PXL
 VSG.J30PX.901804
 3.0 t, air-hydraulic



Jacking beam J30PR
 VSG.J30PR.901392
 3.0 t, air-hydraulic



Jacking beam J30PRL
 VSG.J30PR.901828
 3.0 t, air-hydraulic



Jacking beam J40PRL
 VSG.J40PR.901965
 4.0 t, air-hydraulic



Jacking beam J40PXL
 VSG.J40PX.902191
 4.0 t, air-hydraulic



Jacking beam J40PKL
 VSG.J40PK.901880
 4.0 t, air-hydraulic



Jacking beam J40PY
 VSG.J40PY.902214
 4.0 t, air-hydraulic



Jacking beam J50PHT
 VSG.J50PH.902238
 5 t, 392 mm stroke, air-hydraulic, telescopic jack, roller bearings in the track, air supply on site



Jacking beam J50PHA
 VSG.J50PH.902177
 5.0 t, air-hydraulic

ACCESSORIES

Drive-on ramp kit

S4351A2

Long, 1100 mm | for 4-post lifts RAV4401, RAV4402, RAV4401SI | 1 pair

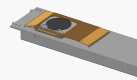

Drive-through ramp kit

S4351A1

For RAV4401, RAV4402, RAV4401SI | 1 set / 2 pieces


Post covers for 4-post lift

S401A8


Seat for turntables | plates and slip plates excluded | 1 set

STDA140

For RAV4350, RAV4401, RAV4405L, RAV4501L, RAV4651L, RAV4800


Rubber pads

S505A7

20 mm | suitable for RAV.640N1.193391, RAV.650N1.193742, RAV.650N2.193858, RAV.650N2.193520, RAV.650N2.193667, RAV.650N6.193964, RAV.650N5.193902, RAV.660N2.193360, RAV.650N5.193018, RAV.650N6.193025, RAV.640N5.193049, RAV.640N4.192998, RAV.640N3.192981, RAV.650N2.193384 and RAV.650N5.193919 | 1 set / 4 pieces


Rubber pads

S505A6

40 mm | suitable for RAV.640N1.193391, RAV.650N1.193742, RAV.650N2.193858, RAV.650N2.193520, RAV.650N2.193667, RAV.650N6.193964, RAV.650N5.193902, RAV.660N2.193360, RAV.650N5.193018, RAV.650N6.193025, RAV.640N5.193049, RAV.640N4.192998, RAV.640N3.192981, RAV.650N2.193384 and RAV.650N5.193919 | 1 set / 4 pieces


Rubber pads

S505A9

60 mm | suitable for RAV.640N1.193391, RAV.650N1.193742, RAV.650N6.193964, RAV.660N2.193360, RAV.650N6.193025, RAV.640N5.193049 and RAV.640N4.192998 | 1 set / 4 pieces


Rubber pads

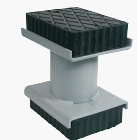
S505A5

120 mm | suitable for RAV.640N1.193391, RAV.650N1.193742, RAV.650N2.193858, RAV.650N2.193520, RAV.650N2.193667, RAV.650N6.193964, RAV.650N5.193902, RAV.660N2.193360, RAV.650N5.193018, RAV.650N6.193025, RAV.640N5.193049, RAV.640N4.192998, RAV.640N3.192981, RAV.650N2.193384 and RAV.650N5.193919 | 1 set / 4 pieces


Traverses for XS30-CAT

S505A2

For vans and off-road vehicles | 1 set / 2 pieces


Rubber pads

S505A1

200 mm | suitable for RAV.640N1.193391, RAV.650N1.193742, RAV.650N2.193858, RAV.650N2.193520, RAV.650N2.193667, RAV.650N6.193964, RAV.650N5.193902, RAV.660N2.193360, RAV.650N5.193018, RAV.650N6.193025, RAV.640N5.193049, RAV.640N4.192998, RAV.640N3.192981, RAV.650N2.193384 and RAV.650N5.193919 | 1 set / 4 pieces

TECHNICAL DETAILS

| | |
|--|------------------|
| Number of columns | 4 |
| Mode of drive | Electrohydraulic |
| Control | Electric |
| Type of installation | Floor mounted |
| Capacity | 4000kg |
| Max. lifting height | 1905mm |
| Drive-on-height | 150mm |
| Clear span between | 2800mm |
| Clear span between (out) | 3155mm |
| Column height | 2614mm |
| Drive-through width | 2470mm |
| Wheel alignment | Optional |
| Length of platforms | 4460mm |
| Width of platforms | 500mm |
| Space of platforms | 910 - 1250mm |
| Set-up length with drive-on ramps | 5418mm |
| Driving power | 2,6kW |
| Country of Origin, customs | IT |