



2-post lift KPX55ELIKTA

GTIN: 5063084198976

SKU: RAV.KPX55.198976

5.5 t, electromechanical, symmetric, 4 long arms, front arms 4-stage, double control panel, TEq-Link, energy kit | Blue (RAL 5005)

DESCRIPTION

Legend Series - From History to the Future

- Up-to-date design: modern outline that brings modernity and usability to the workshop
- Innovative DNA: long-standing high-quality components and tested for 20000 cycles
- Future-proof: lifts designed for the TEq-Link workshop connectivity system

Emerging from the bestselling 2-post lifts, the Legend Series consolidates the engineering knowledge of Ravaglioli and shapes it into an innovative package. Looking towards the future while always honouring the past, Ravaglioli has set an important goal for itself - let the performance meet the design.

- Controlled up/down by pushing button positioned at an ergonomic height.
- Minimum height of the pads suitable for asymmetric loading, of armoured cars as well.
- Smart and flexible installation - Up to 20% improvement in installation time: The electronic synchronization avoids the installation and adjustment of the realignment cable. The lifts can be installed in a flexible way thanks to three width adjustable positions.

- More space for movement around the vehicle - The lift is designed to maximise its layout while ensuring minimum space requirements.
- TEq-Link connected workshop - All models of this series are equipped with up/down buttons and TEq-Link connectivity.

- The geometry of the arms was designed to lift long-wheelbase commercial vehicles and vans, as well as cars and armoured cars
- Version with two arms long 3-stage and two short 4-stage 4 stages

- Automatic arm locking system
- High efficiency motors
- E version equipped with double control panel and Energy kit
- Automatic and permanent nut lubrication system to guarantee efficient movement during lifting and descent
- Steel high resistance rolled screw to provide long life
- Equipped with an acoustic anti-toe trap system - Free from mechanical foot guards
- Possibility to install without gantry since cables can be placed inground
- Premium quality of components:
 - Aluminium pulley with cooling function
 - Long-lasting bearings
 - 50% longer, bronze load nut
 - Motors with reinforced and cooling casing
 - Solid automatic arm locking

STAMPATO IL

KPX55ELIKTA specifications	
Number of columns	2
Lifting Capacity	5500 kg
Required ceiling height	5300 mm
Height overall	5210 mm
Outside columns	3622 mm
Inside columns	3100 mm
Drive-Thru	2762 mm
Front Arm Min	714 mm
Front Arm Max	1790 mm
Rear Arm Min	836 mm
Rear Arm Max	1791 mm
Max. pad Height	169 mm
Min. pad Height	114 mm
Lifting height max.	2024 mm
Rise	1855 mm
Lifting/lowering time	58 secs.
Power supply	400 V 50 Hz 3Ph
Driving power	2x3.5 Kw

DATA: 03/05/2022	REV: S.lazzetta	NOTE:	R. FERRI-BOCCA B/N° 4862
DESCRIZIONE: KPX55ELIKTA			LA CODICE 047307200 02

Grid of vehicle diagrams showing lift arm configurations for various models:

- SMART
- BMW - Z4
- BMW - i3
- BMW - E83
- VW - T6 passo lungo
- VW - TIGUAN
- VW - TIGUAN
- VW - TIGUAN
- VW - TIGUAN
- VW - TIGUAN
- VW - TIGUAN
- VW - TIGUAN
- VW - TIGUAN
- VW - TIGUAN
- VW - TIGUAN
- VW - TIGUAN
- VW - TIGUAN
- VW - TIGUAN
- VW - TIGUAN

VPS
047307200 - 0122 - 02 - 047307200

ACCESSORIES

Tool trays

VSG.2CALL.902641
Magnetic | 1 set / 2 pieces


Spacers for pads for electromechanical lifts

VSG.2CALL.901071
4 x 89 mm, 4 x 127 mm, incl. 2 brackets for mounting on the pillars | 1 set / 8 pieces


Spacers for pads

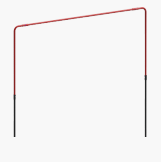
VSG.2CALL.901248
4 x 200 mm, incl. bracket for mounting on the pillars | 1 set / 4 pieces


Eyebolt

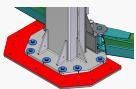
VSG.2CELM.902894
5.5 t | facilitates the handling and installation of the lift, reusable for multiple installations | 1 set


Pads frame adapters kit

VSG.2CALL.901163
Pads frame adapters kit Ø 120 mm (1 set, 2 pcs), for turntable


Crossbar height adjustment

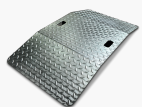
VSG.2CELM.902344
Kit for increasing overhead cable passage height by up to +1.5 m | for spindle lifts | 1 set


Support plates

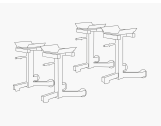
VSG.2CALL.902412
5.5 t | allows installation on floors with poor capacity or lower concrete thickness | 1 set / 2 pieces


Inground cable connection kit

VSG.2CELM.902498
Allows columns connection cables to be placed inground | 1 piece


Vehicles lift platforms

VSG.2CALL.902818
Ramp height 60 mm, for extremely low vehicles | 1 set / 2 pieces


Stands for alignment

VSG.2CALL.902085
1 set / 4 pieces


Tension belt gauge

VSG.2CALL.902429

TECHNICAL DETAILS

Number of columns	2
Capacity	5500kg
Column layout	Symmetrical
Mode of drive	Electromechanical
Control	Electric
Type of installation	Floor mounted
TeqLink	Standard
Max. lifting height	2024mm
Lifting time	58s
Min. plate height	114mm
Max. plate height	169mm
Clear span between	3000 - 3100mm
Clear span between (out)	3522 - 3622mm
Column height	3080mm
Drive-through width	2662 - 2762mm
Required ceiling height	5300mm
Surface coating	Powder coated
Arm layout	Asymmetrical
Telescopic front arms	4-fold
Telescopic rear arms	3-fold
Min. front arm length	714mm
Max. front arm length	1790mm
Min. rear arm length	836mm
Max. rear arm length	1791mm

Driving power	2 x 3,5kW
Electrical connection	400 V, 50 Hz
Phases	3
Width	3724 - 3824mm
Height	5210mm
Max. height	5210mm