



## **2-post lift KPX40AV**

GTIN: 5063084982049

SKU: RAV.KPX40.982049

4.0 t, electromechanical, push-button control, symmetrical posts, asymmetrical AV arms, 3-stage long arms, 3-stage short arms, TEq-Link | Blue (RAL 5005)

---

### **DESCRIPTION**

Legend Series - From History to the Future

- Up-to-date design: modern outline that brings modernity and usability to the workshop
- Innovative DNA: long-standing high-quality components and tested for 20000 cycles
- Future-proof: lifts designed for the TEq-Link workshop connectivity system

Emerging from the bestselling 2-post lifts, the Legend Series consolidates the engineering knowledge of Ravaglioli and shapes it into an innovative package. Looking towards the future while always honouring the past, Ravaglioli has set an important goal for itself - let the performance meet the design.

- The geometry of the arms is designed to lift every type of car from classic city cars to vans.
- The innovative AV ("All Vehicles") arms extend 20% further than conventional arms, allowing them to reach the lifting points of a wide range of vehicles.

- High-performance motors.
- Automatic arm lock and automatic ground release: conical geometry with self-locking effect.
- Permanent and automatic lubrication of the nuts to ensure effective operation during upward and downward movement.
- High-strength rolled steel screw for maximum durability.
- Arms made of special steel, with first stage height just 70 mm and second stage height 85 mm.
- Equipped with an acoustic anti toe trap system - Free from mechanical foot guards.
- Premium quality of components:
  - Aluminium pulley with cooling function.
  - Long lasting bearings.
  - 50% longer, bronze load nut.
  - Motors with reinforced and cooling casing.
  - Solid automatic arm locking.

**ACCESSORIES**

**Eyebolt**

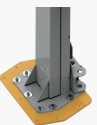
VSG.2CELM.901927

3.5 t - 4.2 t | facilitates installation of the lift, can be used again for other installations | 1 set


**Inground cable connection kit**

VSG.2CELM.902498

Allows columns connection cables to be placed inground | 1 piece


**Support plates**

VSG.2CALL.901453

4 / 4.2 / 4.5 t | allows installation on floors with poor capacity or lower concrete thickness | 1 set / 2 pieces


**Vehicles lift platforms**

VSG.2CALL.902818

Ramp height 60 mm, for extremely low vehicles | 1 set / 2 pieces


**Stands for alignment**

VSG.2CALL.902085

1 set / 4 pieces


**Tool trays**

VSG.2CALL.902641

Magnetic | 1 set / 2 pieces

**TECHNICAL DETAILS**

<b>Number of columns</b>	2
<b>Capacity</b>	4000kg
<b>Column layout</b>	Symmetrical
<b>Mode of drive</b>	Electromechanical
<b>Control</b>	rotating switch
<b>Type of installation</b>	Floor mounted
<b>TeqLink</b>	Standard
<b>Max. lifting height</b>	1982mm
<b>Lifting time</b>	58s
<b>Min. plate height</b>	97mm
<b>Max. plate height</b>	127mm
<b>Clear span between</b>	2700 - 2800mm
<b>Clear span between (out)</b>	3194 - 3094mm
<b>Column height</b>	2863mm
<b>Drive-through width</b>	2504mm
<b>Required ceiling height</b>	4100mm
<b>Surface coating</b>	Powder coated
<b>Arm layout</b>	Asymmetrical
<b>Telescopic front arms</b>	3-fold
<b>Telescopic rear arms</b>	3-fold
<b>Min. front arm length</b>	470mm
<b>Max. front arm length</b>	1039mm
<b>Min. rear arm length</b>	725mm
<b>Max. rear arm length</b>	1480mm

<b>Driving power</b>	2 x 3,5kW
<b>Electrical connection</b>	400 V, 50 Hz
<b>Phases</b>	3
<b>Width</b>	3428 - 3528mm
<b>Height</b>	4000mm
<b>Max. height</b>	4000mm