



2-post lift KPX35LLE

GTIN: 5063084199294

SKU: RAV.KPX35.199294

3.5 t, electromechanical, symmetrical, arms for extra-low vehicles, TEq-Link, energy kit

DESCRIPTION

Legend Series - From History to the Future

- Up-to-date design: modern outline that brings modernity and usability to the workshop
- Innovative DNA: long-standing high-quality components and tested for 20000 cycles
- Future-proof: lifts designed for the TEq-Link workshop connectivity system

Emerging from the bestselling 2-post lifts, the Legend Series consolidates the engineering knowledge of Ravaglioli and shapes it into an innovative package. Looking towards the future while always honouring the past, Ravaglioli has set an important goal for itself - let the performance meet the design.

- Quick and easy operations: Free of obstacles working space to guarantee safety and comfort. - Outrigger plates are available upon request, for floors not compliant with installation requirements.
- Smart and flexible installation: Up to 20% improvement in installation time. The electronic synchronization avoids the installation and periodical adjustment of the realignment cable. The lifts can be installed in a flexible way thanks to three width-adjustable positions.
- Minimum routine maintenance: The operating parts require little time for easy replacement or maintenance

ACCESSORIES

Tool trays

VSG.2CALL.902641
Magnetic | 1 set / 2 pieces


Spacers for pads for electromechanical lifts

VSG.2CALL.901071
4 x 89 mm, 4 x 127 mm, incl. 2 brackets for mounting on the pillars | 1 set / 8 pieces


Spacers for pads

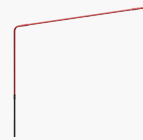
VSG.2CALL.901248
4 x 200 mm, incl. bracket for mounting on the pillars | 1 set / 4 pieces


Eyebolt

VSG.2CELM.901927
3.5 t - 4.2 t | facilitates installation of the lift, can be used again for other installations | 1 set


Pads frame adapters kit

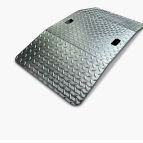
VSG.2CALL.901163
Pads frame adapters kit Ø 120 mm (1 set, 2 pcs), for turntable


Crossbar height adjustment

VSG.2CELM.902344
Kit for increasing overhead cable passage height by up to +1.5 m | for spindle lifts | 1 set


Support plates

VSG.2CALL.901378
3.5 t | allows installation on floors with poor capacity or lower concrete thickness | 1 set / 2 pieces


Vehicles lift platforms

VSG.2CALL.902818
Ramp height 60 mm, for extremely low vehicles | 1 set / 2 pieces


Stands for alignment

VSG.2CALL.902085
1 set / 4 pieces


Width extension

VSG.2CELM.902283
For 2-post lift KPX35LLE | enables columns to be widened up to 3200 mm

TECHNICAL DETAILS

| | |
|---------------------------------|-------------------|
| Number of columns | 2 |
| Capacity | 3500kg |
| Column layout | Symmetrical |
| Mode of drive | Electromechanical |
| Control | Electric |
| Type of installation | Surface mounted |
| TeqLink | Standard |
| Max. lifting height | 1973mm |
| Lifting time | 42s |
| Min. plate height | 83mm |
| Max. plate height | 148mm |
| Clear span between | 2900 - 3000mm |
| Clear span between (out) | 3424 - 3524mm |
| Drive-through width | 2604 - 2704mm |
| Required ceiling height | 4100mm |
| Surface coating | Powder coated |
| Arm layout | Symmetrical |
| Telescopic front arms | 2-fold |
| Telescopic rear arms | 2-fold |
| Min. front arm length | 810mm |
| Max. front arm length | 1250mm |
| Min. rear arm length | 810mm |
| Max. rear arm length | 1250mm |
| Driving power | 2 x 2,6kW |

Electrical connection 400 V, 50 Hz

Phases 3

Width 3628 - 3728mm

Height 4000mm

Max. height 4000mm