



## **2-post lift KPH370.50LIK**

GTIN: 4057612814316

SKU: KPH370.50LIK

5.0 t, electrohydraulic, symmetrical, arms for lifting of long wheel base vans and easy loading of cars

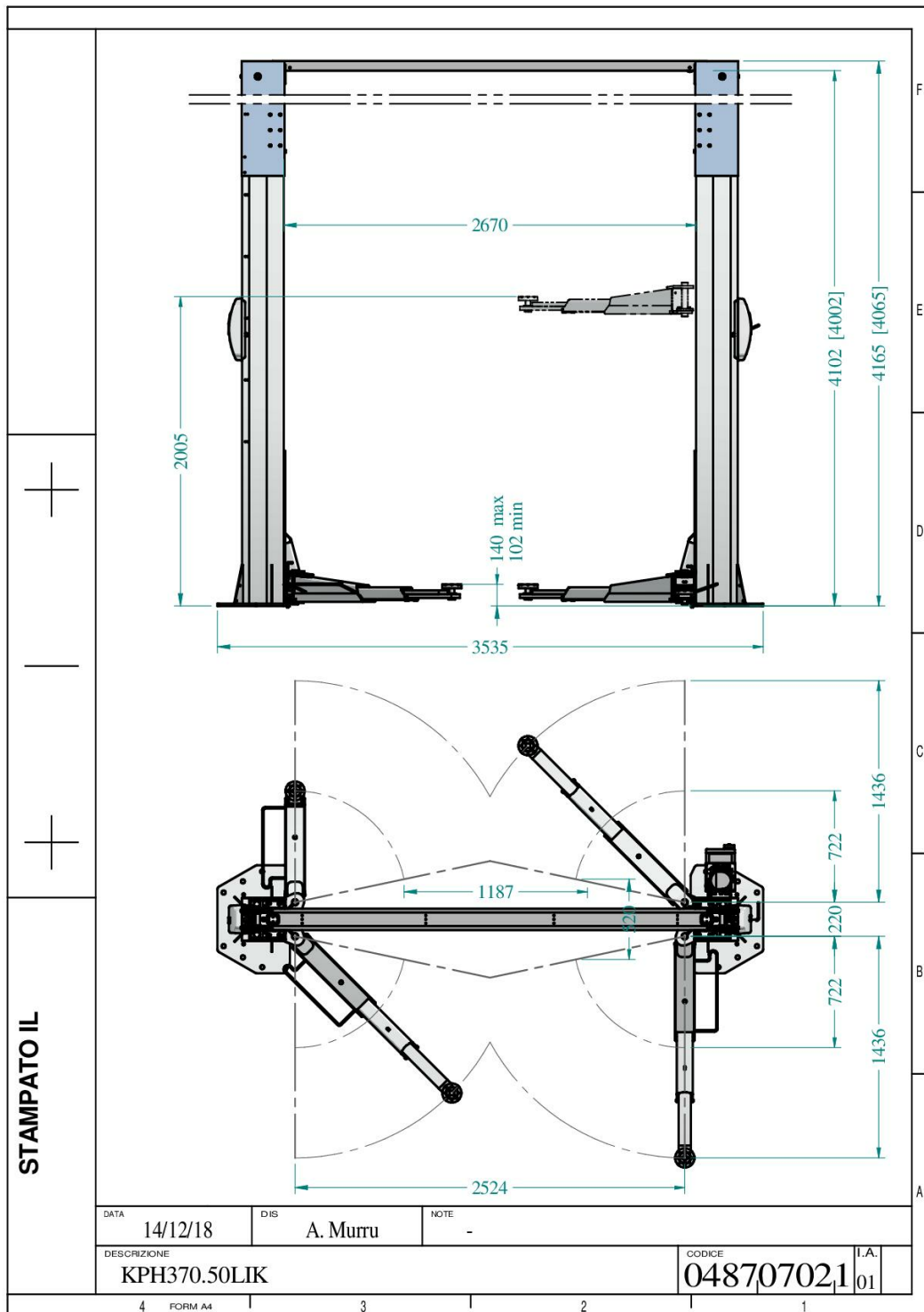
---

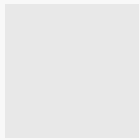
### **DESCRIPTION**

Model equipped with four long three-stage arms: ideal to lift long wheel base vans and easy loading of cars.

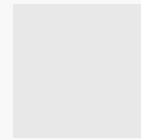
- Mechanical safety latch with automatic engagement ensuring maximum safety when lift is in standing position
- Automatic arm locking during lifting and automatic unlocking when the arms reach the floor
- Synchronization cables grant the levelling of the two carriages
- Each column features a maintenance-free lifting cylinder
- Adjustable height
- Specially manufactured high efficiency motors
- Laser cut carriages and arms - robot welding
- Easy to adjust cables
- Exclusive 10+8 bending design to ensure max resistance to load
- Version on demand featuring:
  - Single lifting/lowering control
  - Pneumatic release of locking devices
  - Control unit on the upper part of the column
  
- The piston is hidden for long life and low operation costs
- Pulley protected inside the column

- Self-locking conical design
- Very low pad, adjustable height



**ACCESSORIES**


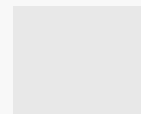
**Product 199834**  
199834



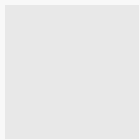
**Product 200350**  
200350



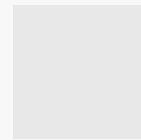
**Supports for spacers, bushing Ø 45 mm**  
S370A3  
For 2-post lifts | 1 set / 2 pieces



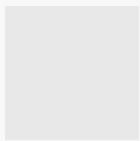
**Product 200554**  
200554



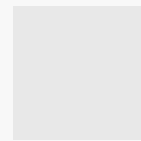
**Product 200800**  
200800



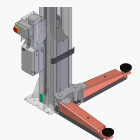
**Product 199528**  
199528



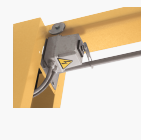
**Product 199534**  
199534



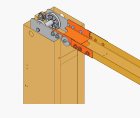
**Product 200182**  
200182



**Door protections for 2-post lifts**  
S370A5  
1 set / 2 pieces



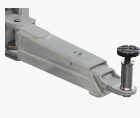
**Limit switch | operated by bar | for 3-phase power supply | supplied not installed**  
S370A20  
For all lifts with 3-phase power supply



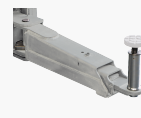
**Width extension 200 mm**  
S370A4  
200 mm



**Spacers 80 mm**  
S224A3  
For Fiat Ducato, Peugeot Boxer and Citroën Jumper | for quick drop-in of the K arms, bushing Ø 45 mm | 1 set / 4 pieces



**Spacers 140 mm**  
S224A4  
For Fiat Ducato, Peugeot Boxer and Citroën Jumper | for quick drop-in of the K arms, bushing Ø 45 mm | 1 set / 4 pieces



**Spacers 200 mm, Ø 45 mm**  
S370A18  
For Fiat Ducato, Peugeot Boxer and Citroën Jumper | bushing Ø 45 mm | 1 set / 4 pieces

**TECHNICAL DETAILS**

<b>Number of columns</b>	2
<b>Capacity</b>	5000kg
<b>Mode of drive</b>	Electrohydraulic
<b>Control</b>	Electric
<b>Type of installation</b>	Floor mounted
<b>Max. lifting height</b>	2005mm
<b>Lifting time</b>	33s
<b>Min. plate height</b>	102mm
<b>Max. plate height</b>	140mm
<b>Clear span between</b>	2670mm
<b>Clear span between (out)</b>	3210mm
<b>Column height</b>	3000mm
<b>Drive-through width</b>	2590mm
<b>Required ceiling height</b>	4245mm
<b>Surface coating</b>	Powder coated
<b>Arm layout</b>	Symmetrical
<b>Telescopic front arms</b>	3-fold
<b>Telescopic rear arms</b>	3-fold
<b>Min. front arm length</b>	722mm
<b>Max. front arm length</b>	1436mm
<b>Min. rear arm length</b>	722mm
<b>Max. rear arm length</b>	1436mm
<b>Driving power</b>	3,5kW
<b>Electrical connection</b>	230/400 V, 50 Hz

<b>Width</b>	3535mm
<b>Height</b>	4165mm
<b>Max. height</b>	4165mm
<b>Country of Origin, customs</b>	IT