



2-post lift KPH370.45LIK

SKU: KPH370.45LIK

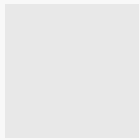
4.5 t, electrohydraulic, symmetrical, arms for lifting of long wheel base vans and easy loading of cars

DESCRIPTION

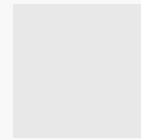
Model equipped with four long three-stage arms: ideal to lift long wheel base vans and easy loading of cars.

- Mechanical safety latch with automatic engagement ensuring maximum safety when lift is in standing position
- Automatic arm locking during lifting and automatic unlocking when the arms reach the floor
- Synchronization cables grant the levelling of the two carriages
- Each column features a maintenance-free lifting cylinder
- Adjustable height
- Specially manufactured high efficiency motors
- Laser cut carriages and arms - robot welding
- Easy to adjust cables
- Exclusive 10+8 bending design to ensure max resistance to load
- Version on demand featuring:
 - Single lifting/lowering control
 - Pneumatic release of locking devices
 - Control unit on the upper part of the column

- The piston is hidden for long life and low operation costs
- Pulley protected inside the column

ACCESSORIES


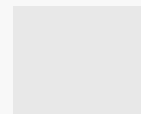
Product 199834
199834



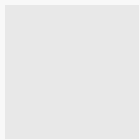
Product 200350
200350



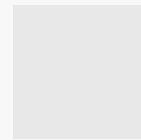
Supports for spacers, bushing Ø 45 mm
S370A3
For 2-post lifts | 1 set / 2 pieces



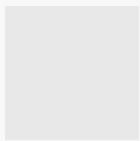
Product 200554
200554



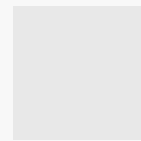
Product 200800
200800



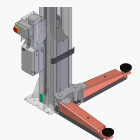
Product 199528
199528



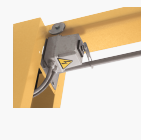
Product 199534
199534



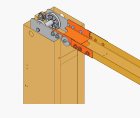
Product 200182
200182



Door protections for 2-post lifts
S370A5
1 set / 2 pieces



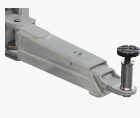
Limit switch | operated by bar | for 3-phase power supply | supplied not installed
S370A20
For all lifts with 3-phase power supply



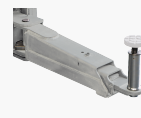
Width extension 200 mm
S370A4
200 mm



Spacers 80 mm
S224A3
For Fiat Ducato, Peugeot Boxer and Citroën Jumper | for quick drop-in of the K arms, bushing Ø 45 mm | 1 set / 4 pieces



Spacers 140 mm
S224A4
For Fiat Ducato, Peugeot Boxer and Citroën Jumper | for quick drop-in of the K arms, bushing Ø 45 mm | 1 set / 4 pieces



Spacers 200 mm, Ø 45 mm
S370A18
For Fiat Ducato, Peugeot Boxer and Citroën Jumper | bushing Ø 45 mm | 1 set / 4 pieces

TECHNICAL DETAILS

Number of columns	2
Capacity	4500kg
Mode of drive	Electrohydraulic
Control	Electric
Type of installation	Floor mounted
Max. lifting height	2006mm
Lifting time	43s
Min. plate height	100mm
Max. plate height	140mm
Clear span between	2670mm
Clear span between (out)	3206mm
Column height	2875mm
Drive-through width	2399mm
Required ceiling height	4242mm
Surface coating	Powder coated
Arm layout	Symmetrical
Telescopic front arms	3-fold
Telescopic rear arms	3-fold
Min. front arm length	722mm
Max. front arm length	1436mm
Min. rear arm length	722mm
Max. rear arm length	1436mm
Driving power	2,6kW
Electrical connection	230/400 V, 50 Hz

Width 3406mm

Height 4162mm

Max. height 4162mm