



2-post lift KPE32 400 V - 3 Ph - 60 Hz

GTIN: 5063084198747

SKU: RAV.KPE32.198747

3.2 t, electromechanical, asymmetrical, 3-stage long arms, 3-stage short arms | 3 x 400 V / 60 Hz

DESCRIPTION

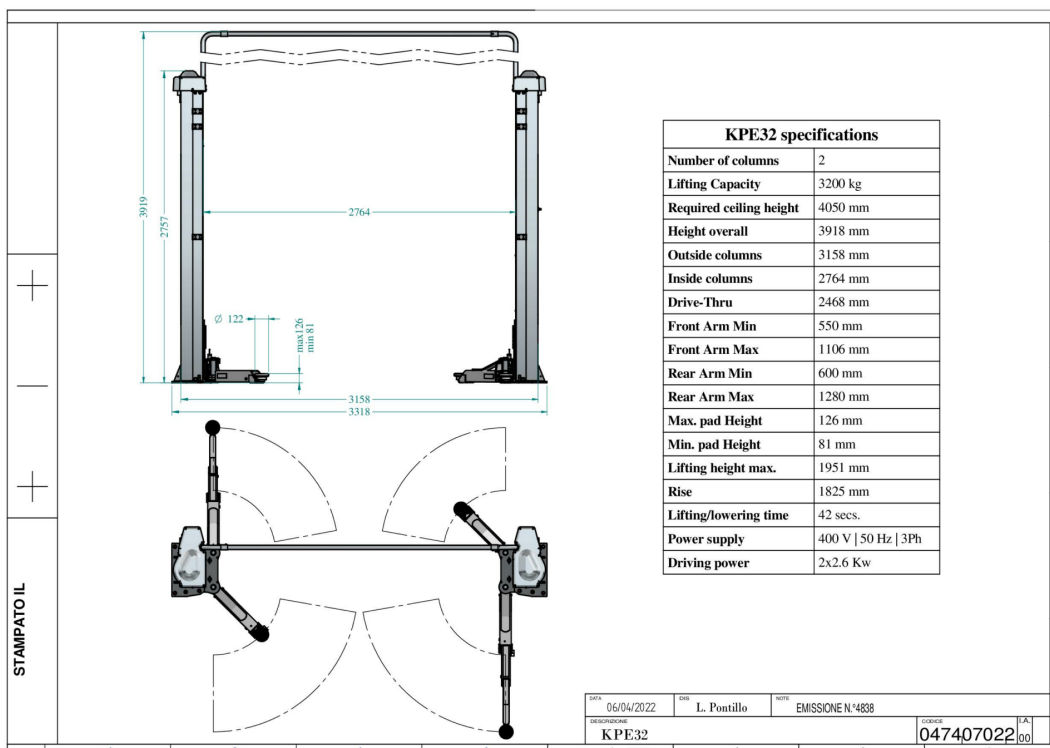
Legend Series - From History to the Future

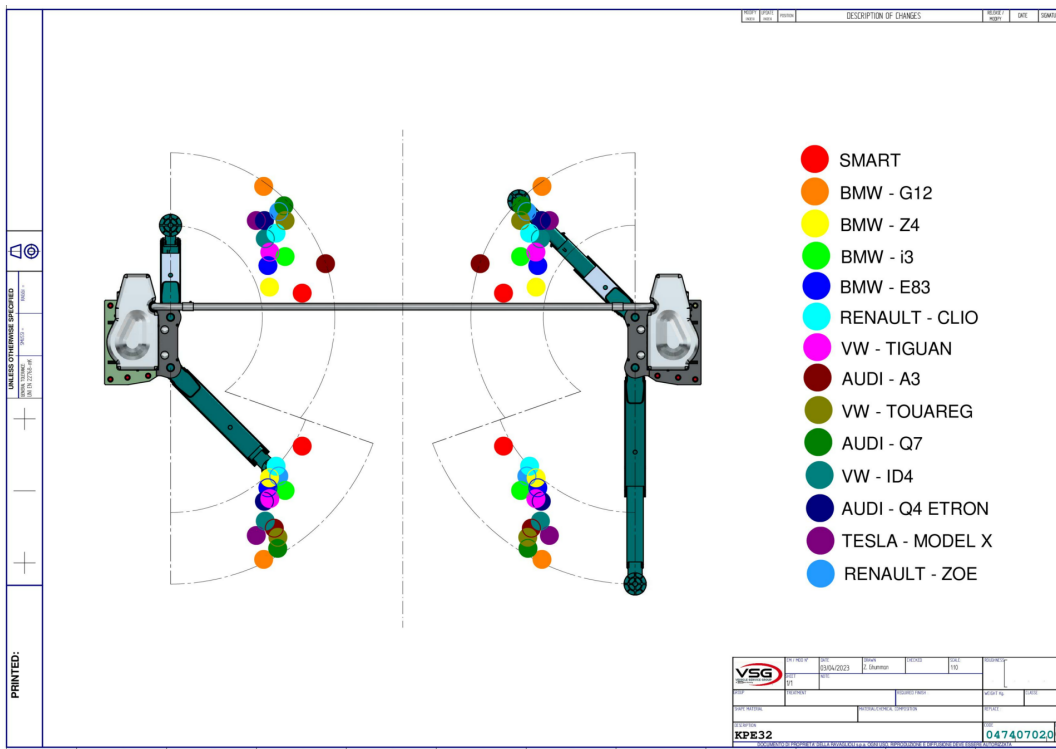
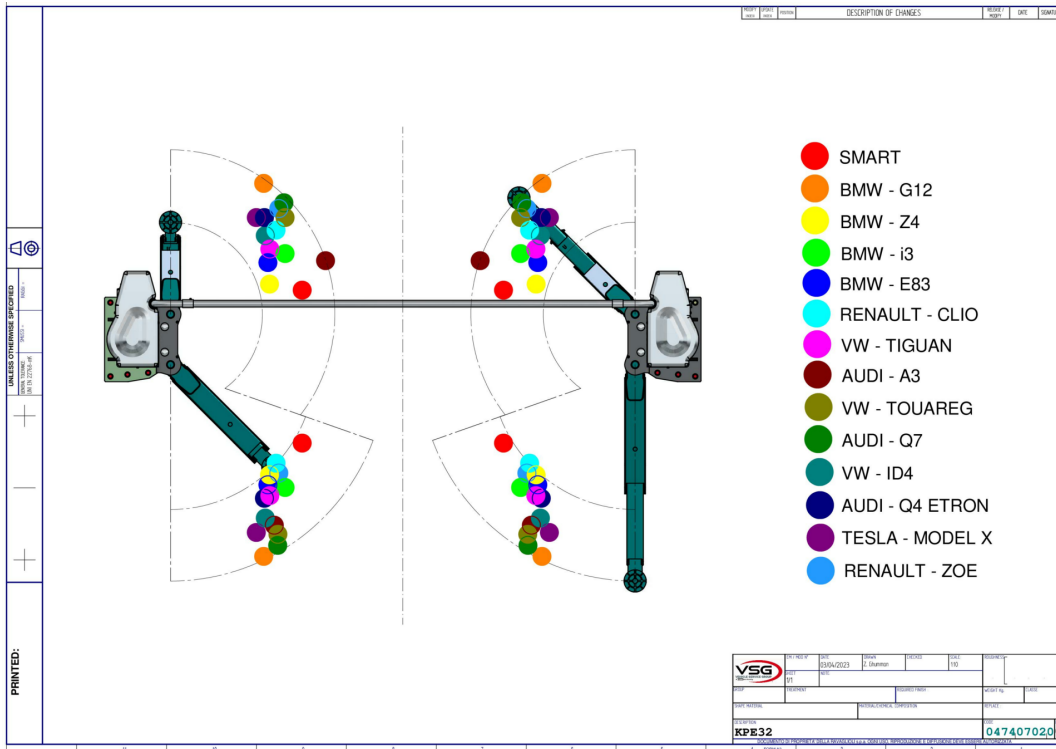
- Modern design: clean and linear column profile with internal carriage
- Innovative DNA: long-standing high-quality components and tested for 20000 cycles
- Space optimisation: ultimate ergonomics thanks to the electronic foot guard

Emerging from the best-selling 2-post lifts, the Legend Series consolidates the engineering knowledge of Ravaglioli and shapes it into an innovative package. Looking towards the future while always honouring the past, Ravaglioli has set an important goal for itself - let the performance meet the design.

- The geometry of the arms was designed to lift anything from city to long-wheelbase cars.
- Quick and easy operations: The working bay is free of obstacles and the operations can be performed safely and comfortably. A pair of outrigger plates for floors not compliant with installation requirements is available upon request.
- Minimum routine maintenance: The operating parts require little time for easy replacement or maintenance reducing the risk of error on safety elements.
- Guaranteed safety and quality over the time: The lift is equipped with premium components that guarantee durability and maximum safety for the operator.

- Quick installation - Up to 20% improvement in installation time: The electronic synchronization avoids the installation and adjustment of the realignment cable. Possibility to install without gantry since cables can be placed inground.
- Electronic synchronization.
- Overhead cable crossing.
- Quick nut replacing - New motor plate that allows to remove the screw from the front side of the column with the column standing.
- Switch operated lifting control.
- Internal carriages running on lubricated sliding guides, protected from the external environment, that ensures a longer life to the sliding elements.
- Wide rubber protected areas.
- Equipped with an acoustic anti-toe trap system - Free from mechanical foot guards.
- Short 3-stage arms and long 3-stage arms with quick fit telescopic rubber pad.
- Premium quality of components:
 - Aluminium pulley with cooling function.
 - Long-lasting bearings.
 - 50% longer, bronze load nut.
 - Motors with reinforced and cooling casing.
 - Solid automatic arm locking.



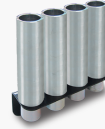


ACCESSORIES

Spacers for pads for electromechanical lifts

VSG.2CALL.901071

4 x 89 mm, 4 x 127 mm, incl. 2 brackets for mounting on the pillars | 1 set / 8 pieces


Spacers for pads

VSG.2CALL.901248

4 x 200 mm, incl. bracket for mounting on the pillars | 1 set / 4 pieces


Eyebolt

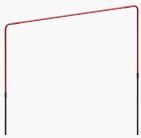
VSG.2CELM.901927

3.5 t - 4.2 t | facilitates installation of the lift, can be used again for other installations | 1 set


Pads frame adapters kit

VSG.2CALL.901163

Pads frame adapters kit Ø 120 mm (1 set, 2 pcs), for turntable


Crossbar height adjustment

VSG.2CELM.902344

Kit for increasing overhead cable passage height by up to +1.5 m | for spindle lifts | 1 set


Tool trays

VSG.2CALL.902641

Magnetic | 1 set / 2 pieces


Pads

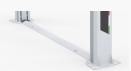
VSG.2CALL.902276

Support plate, rubber pad, adjustable - for quick-positioning on 4 heights | 4-stage | 1 set / 4 pieces


Support plates

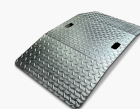
VSG.2CALL.901361

3.2 t | allows installation on floors with poor capacity or lower concrete thickness | 1 set / 2 pieces


Inground cable connection kit

VSG.2CELM.902498

Allows columns connection cables to be placed inground | 1 piece


Vehicles lift platforms

VSG.2CALL.902818

Ramp height 60 mm, for extremely low vehicles | 1 set / 2 pieces


Stands for alignment

VSG.2CALL.902085

1 set / 4 pieces

TECHNICAL DETAILS

Number of columns	2
Capacity	3200kg
Mode of drive	Electromechanical
Control	Electric
Type of installation	Surface mounted
Max. lifting height	2000mm
Lifting time	42s
Min. plate height	90mm
Max. plate height	120mm
Clear span between	2764mm
Clear span between (out)	3158mm
Column height	2756mm
Drive-through width	2468mm
Required ceiling height	4050mm
Surface coating	Powder coated
Arm layout	Asymmetrical
Telescopic front arms	3-fold
Telescopic rear arms	2-fold
Min. front arm length	511mm
Max. front arm length	914mm
Min. rear arm length	805mm
Max. rear arm length	1203mm
Driving power	2 x 3,5kW
Electrical connection	400 V, 60 Hz

Phases	3
Width	3318mm
Height	3918mm
Max. height	3918mm