



2-Cylinder Inground Lift RAV1155LIKTA

GTIN: 4057612815474

SKU: RAV1155LIKTA

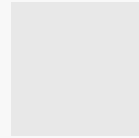
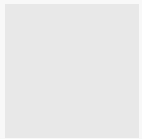
5.5 t, for cars and vans – also with long wheelbase,
with two 2-fold and two 3-fold extendable long arms

DESCRIPTION

- Perfect synchronization between cylinders regardless of load distribution.
- Equipped with safety valve to prevent overloading and in case of hydraulic pipe fracture.
- Self-controlled lowering speed.
- All mechanical, hydraulic and electrical components manufactured in compliance with the respective European Safety Standard.

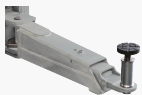
- Maintenance free cylinders: Each column features a maintenance-free lifting cylinder
- Double joint: Cross bar with double joint to eliminate vibrations
- Safe - Mechanical lock: Mechanical safety latch with automatic engagement, ensuring maximum safety when lift is in standing position.
- Hard chrome columns: Hard chrome columns grant long life
- Maintenance free guides: Columns guides in oil bath, maintenance free

- Waterproof inground metal frame
- Lift for cars and vans, also with long wheel-base
- Models equipped with two long 3-stage arms and two long 4-stage arms, to allow easy lifting of large cars
- Clearance of 2160 mm between the columns

ACCESSORIES**Product 199528**
199528**Product 199534**
199534**Product 200182**
200182**Spacers 80 mm**

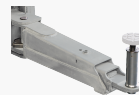
S224A3

For Fiat Ducato, Peugeot Boxer and Citroën Jumper | for quick drop-in of the K arms, bushing Ø 45 mm | 1 set / 4 pieces

**Spacers 140 mm**

S224A4

For Fiat Ducato, Peugeot Boxer and Citroën Jumper | for quick drop-in of the K arms, bushing Ø 45 mm | 1 set / 4 pieces

**Spacers 200 mm, Ø 45 mm**

S370A18

For Fiat Ducato, Peugeot Boxer and Citroën Jumper | bushing Ø 45 mm | 1 set / 4 pieces

TECHNICAL DETAILS

Number of rams	2
Inground lift design	Swivel arm
Type of installation	Surface mounted
Capacity	5500kg
Max. lifting height	2019mm
Plunger diameter	210mm
Column distance	2160mm
Wheel alignment	Not possible
Arm layout	Symmetrical
Telescopic front arms	2-fold
Telescopic rear arms	3-fold
Min. front arm length	840
Max. front arm length	1800mm
Min. rear arm length	713mm
Max. rear arm length	1800mm
Bottom clearance	120mm
Width	3310mm
Installation depth	2496mm